

2200

# The Ridge

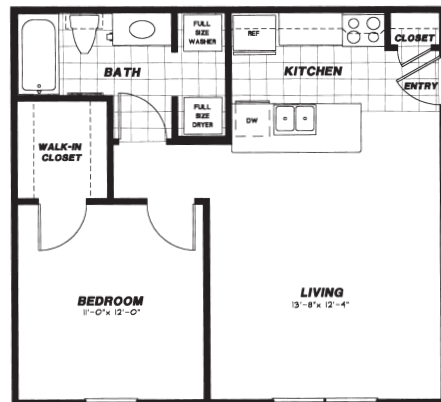
at Meadowlake

2200 Meadowlake Road  
Conway, AR 72032  
(501) 513-2200  
(501) 513-2205 Fax

email: [ridgemeadowlake@aol.com](mailto:ridgemeadowlake@aol.com)  
[www.theridgeatmeadowlakeapartments.com](http://www.theridgeatmeadowlakeapartments.com)  
[www.spectrummanagementar.com](http://www.spectrummanagementar.com)



When an apartment community is as convenient to work and leisure activities as it is inviting to come home to, you truly have combined the best aspects of apartment home living today...

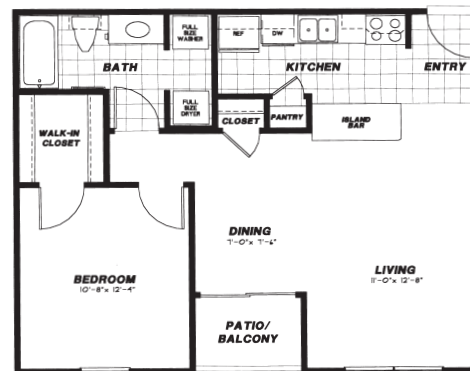


**A1**

One Bedroom / One Bath  
627 Sq. Ft.  
Monthly Rent \_\_\_\_\_  
Security Deposit \_\_\_\_\_

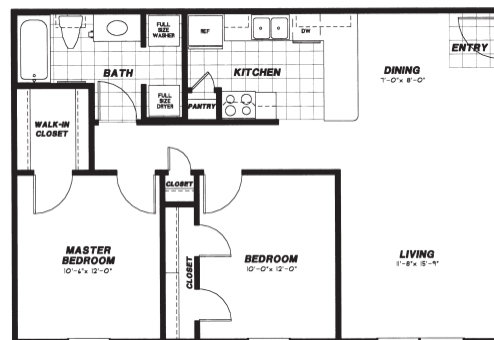
**A2**

One Bedroom / One Bath  
734 Sq. Ft.  
Monthly Rent \_\_\_\_\_  
Security Deposit \_\_\_\_\_



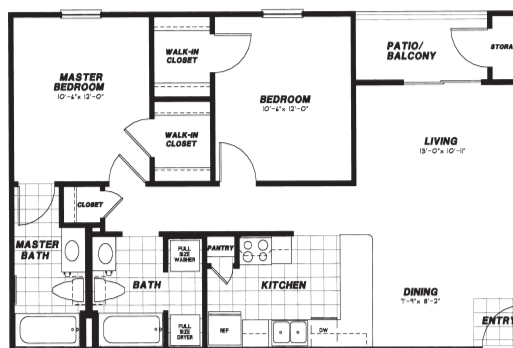
**B1**

Two Bedroom / One Bath  
879 Sq. Ft.  
Monthly Rent \_\_\_\_\_  
Security Deposit \_\_\_\_\_



**B2**

Two Bedroom / Two Bath  
990 Sq. Ft.  
Monthly Rent \_\_\_\_\_  
Security Deposit \_\_\_\_\_



 **The Ridge at Meadowlake, Conway's** most prestigious apartment community, features all the style and comforts you look for in an apartment home. From professionally landscaped grounds to thoughtfully planned and crafted interiors, **The Ridge at Meadowlake** truly offers the best in apartment community living.

### Apartment Home Features

- ❖ Full-Size Washer & Dryer in Each Apartment
- ❖ Heat Pump Comfort & Economy
- ❖ All Brick Construction
- ❖ Patios/Balconies
- ❖ Designer Interiors with Crown Moulding
- ❖ 9' Ceilings Available
- ❖ Icemakers
- ❖ Abundant Natural Light
- ❖ Large Walk-in Closets
- ❖ Pantries & Coat Closets
- ❖ Outside Storage Available
- ❖ White Hotpoint Appliances
- ❖ Beautiful Oak Cabinets
- ❖ High Speed Internet Access

### Community Amenities

- ❖ Controlled Access Entry w/Complimentary Remotes
- ❖ Elegant Clubhouse with Social Area, Kitchen and Large Screen TV
- ❖ Business Center w/Fax, Copier & Computer w/Free Internet Access
- ❖ Fitness Center with Individual Training Equipment
- ❖ Sparkling Swimming Pool
- ❖ Sand Volleyball
- ❖ Basketball Court
- ❖ Lighted Gazebo w/Barbecue Grills & Picnic Area
- ❖ Beautiful Landscaping with Irrigation
- ❖ Minutes from I-40, Shopping and Restaurants
- ❖ Professionally Managed by Spectrum Management Co.

