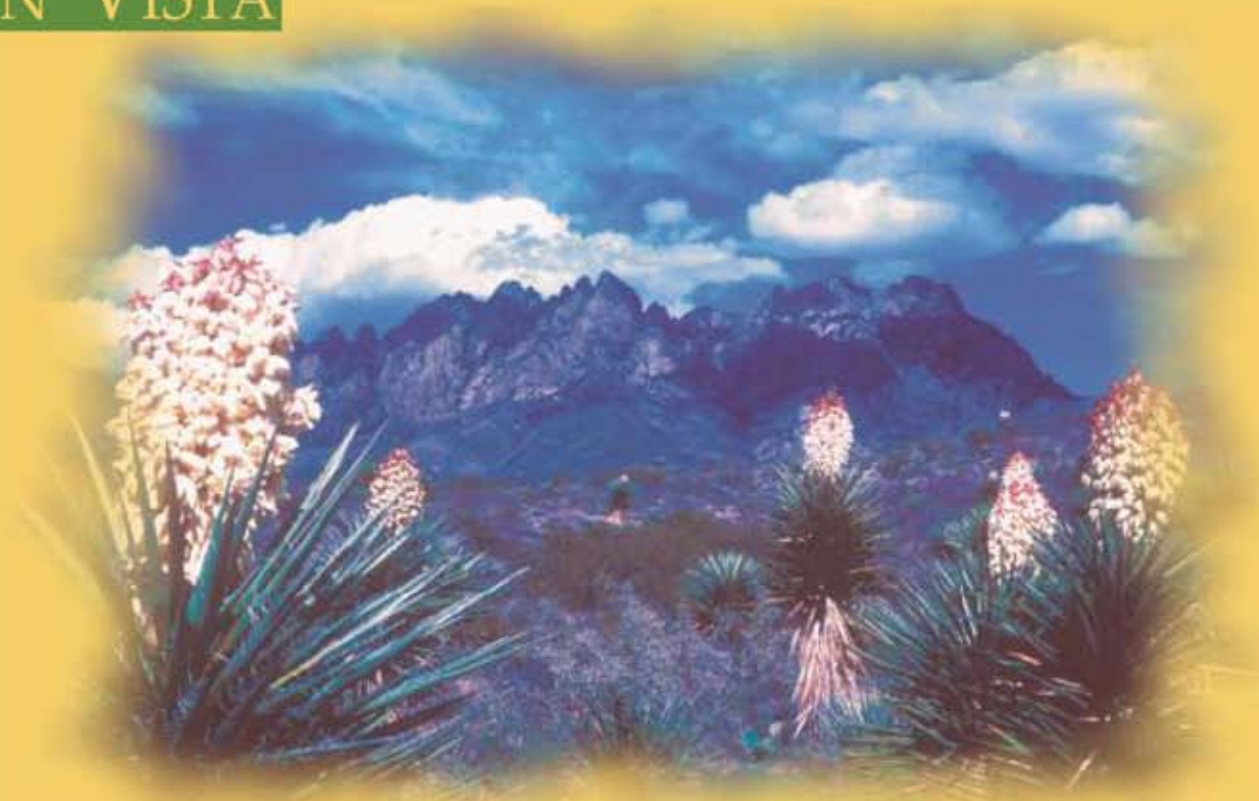


*The Ridge at*



ORGAN VISTA



The Majestic  
**VIEWS**  
Say It All

Scenic Photos By: Walt & Mimi Miller

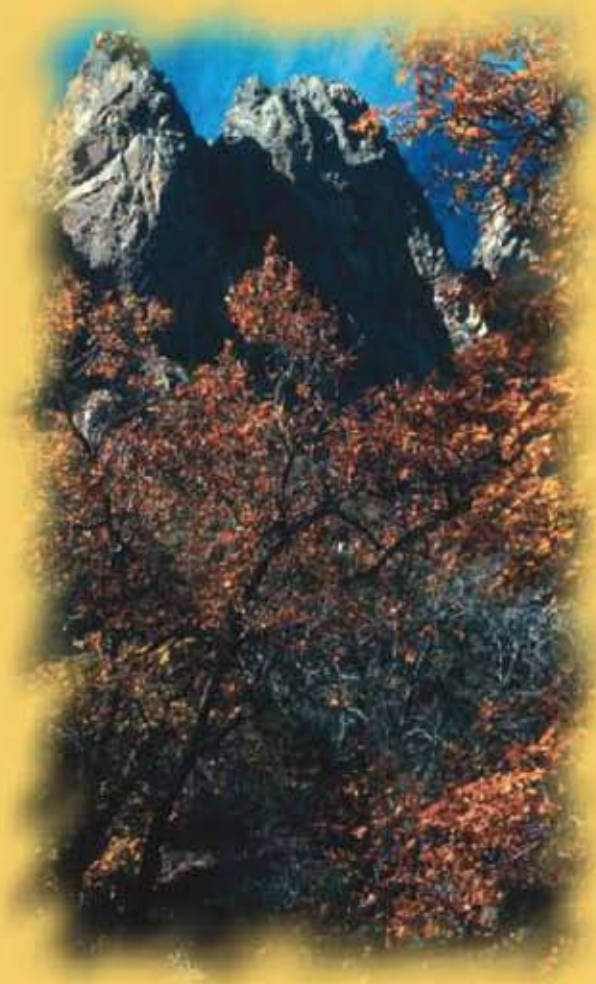
# *The Ridge at Organ Vista.....an address of distinction*

*In a community carved out of the desert hillside, the Ridge at Organ Vista features estate living in an environment that offers privacy and solitude. Truly, this unique community is the perfect place for you to rejuvenate, recharge, and relax. You will appreciate the thoughtful effort that went into the planning of these homes to take full advantage of the majestic Organ Mountains, breathtaking sunsets and the Las Cruces city lights.*

*Eight unique floor plans have been designed to afford the utmost in luxury living. Spacious floor plans create a living environment punctuated by high-end custom home features including granite counter tops, fully equipped kitchens with black appliances, EZ clean ceramic range tops, private entrances and attached garages. Under cabinet accent lighting, side-by-side refrigerators with ice and water dispensers, built-in barbeque grills on an outdoor patio, built-in entertainment areas, four fixture baths, private fenced yards, niches with accent lighting, gas fireplaces with tiled hearth and custom wood mantels are featured in select units.*

*Our community offers elegant and distinctive living. The country club atmosphere provides the opportunity to entertain, exercise, swim, or relax in our dry sauna. Organ Vista Estates is located in the heart of the growth area of Las Cruces with Sonoma Ranch Golf Course, Mountain View Hospital, local schools, and many of the finest restaurants, theaters, and shopping nearby. Yet at the same time, the minute you enter your distinctively spectacular gated community, you'll find yourself as far removed from civilization as you like.*

*Rejuvenate your life in our beautiful desert climate. Enjoy the tranquility of the Southwest evenings watching the changing hues of color on the Organ Mountains. Here you can live in a home of great quality with state-of-the-art conveniences, while capturing the Southwest rustic landscape outside your doorway.*



*"Life is not measured by the  
breaths we take,  
but by the moments that take our  
breath away."*



The Majestic  
**VIEWS**  
Say It All



# Exceptional Amenities

- Olympic style swimming pool w/ spa
- Dry sauna
- Breathtaking mountain, sunset and city light views
- Lush landscaping
- Cascading fountains and water features
- Barbeque gazebos
- State-of-the-art, 24-hour fitness facility
- Professionally decorated clubhouse with large entertainment room
- Gated community (after hours)
- Free DVD library
- Scheduled community activities
- Monthly newsletters
- Pets welcome (breed restrictions apply)
- Professional on-site management
- 24-hour emergency maintenance
- Close to shopping, hospitals, schools, dining, theaters and Sonoma Ranch Golf Course
- Excellent location for jogging, walking and bike riding.



# Elegant Interiors

- Fully equipped kitchens with black GE appliances: dishwashers, icemakers, microwave ovens, frost free refrigerators, EZ clean ceramic range tops, and garbage disposals
- Side-by-side refrigerators with ice and water dispenser\*
- Accent lighting under kitchen wall cabinets\*
- Full-size washers and dryers in every unit
- Full-length mirrored closet doors\*
- Dual vanity sinks\*
- Large walk-in closets, linen closets, hall closets, and pantries\*
- Private patios/balconies
- Private entrances
- Large bay windows\*
- Oversized garden tubs
- Elevated ceilings
- Doorbells
- Granite counter tops and ceramic tile accents throughout
- Attached 1 and 2 car garages
- Ceiling fans
- Custom blinds
- Breakfast nooks\*

- Study\*
- Gas fireplace with tile hearth and custom wood mantle\*
- Energy efficient refrigerated air conditioners (SEER 13)
- Double pane insulated windows
- Prewired for both cable TV and satellite
- Built in barbeque grills on private outdoor patio\*
- Private fenced yards\*
- Niches with accent lights\*

\* Select Units





The Ridge at



ORGAN VISTA

# Site Map



FRONTIER DRIVE



*"Life's a voyage that's  
homeward bound."*

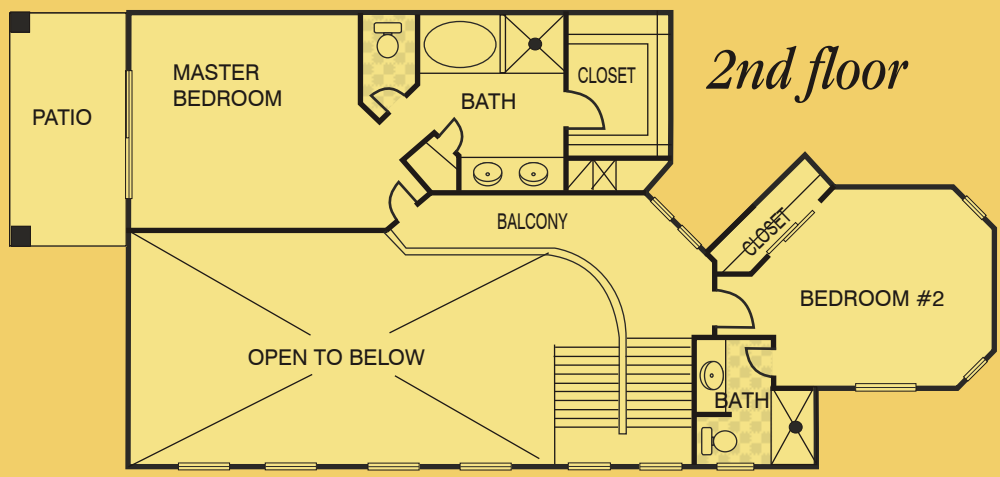
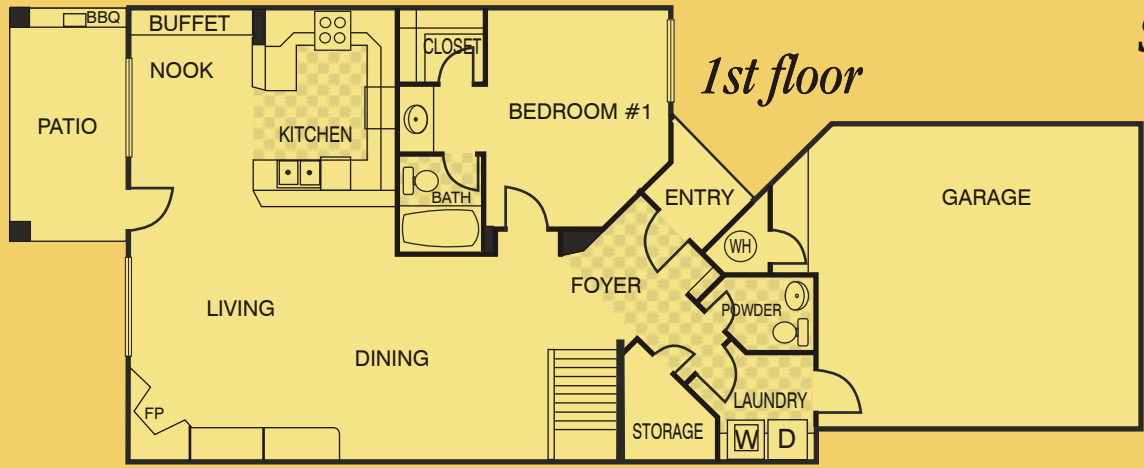


Organ Vista has a home to fit your lifestyle. You'll find eight distinctive floor plans ranging in size from a 854 sf one-bedroom to a 2,136 sf three-bedroom townhome, all with attached garages. Each plan has a private entrance. Select your new home from the floor plans on the following pages.

*“What you look for in a home says a lot about what you look for in life.”*

# THE GUADALUPE

3 Bdrm - 3.5 Bath townhome w/ attached 2-car garage  
2136 total square feet of living space



## Special Features

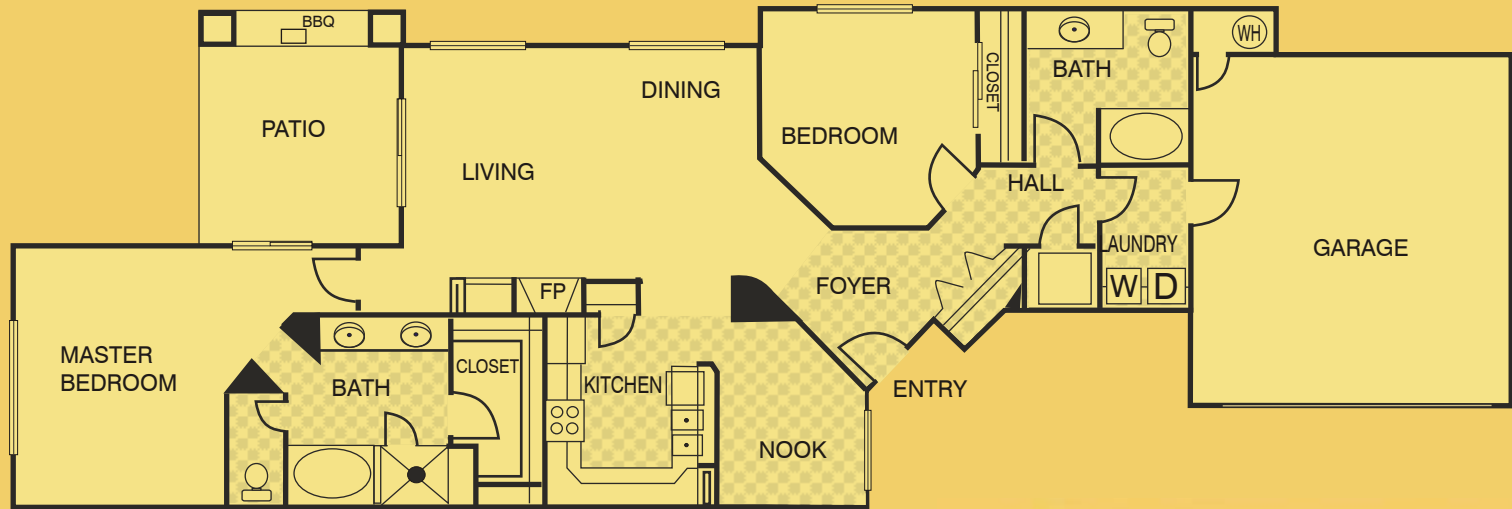
- Large covered patio with built-in natural gas BBQ.
- Private yard
- Natural gas fireplace w/log kit
- Guest powder room
- Private baths off each bedroom
- Breakfast nook with built-in buffet
- Built-in entertainment area
- Garden tubs and walk-in showers
- Covered deck off master bedroom
- Dual vanity sinks in master bath



# THE SIERRA BLANCA

2 Bedroom - 2 Bath w/ attached 2-car garage

1,598 total square feet of living space



## Special Features

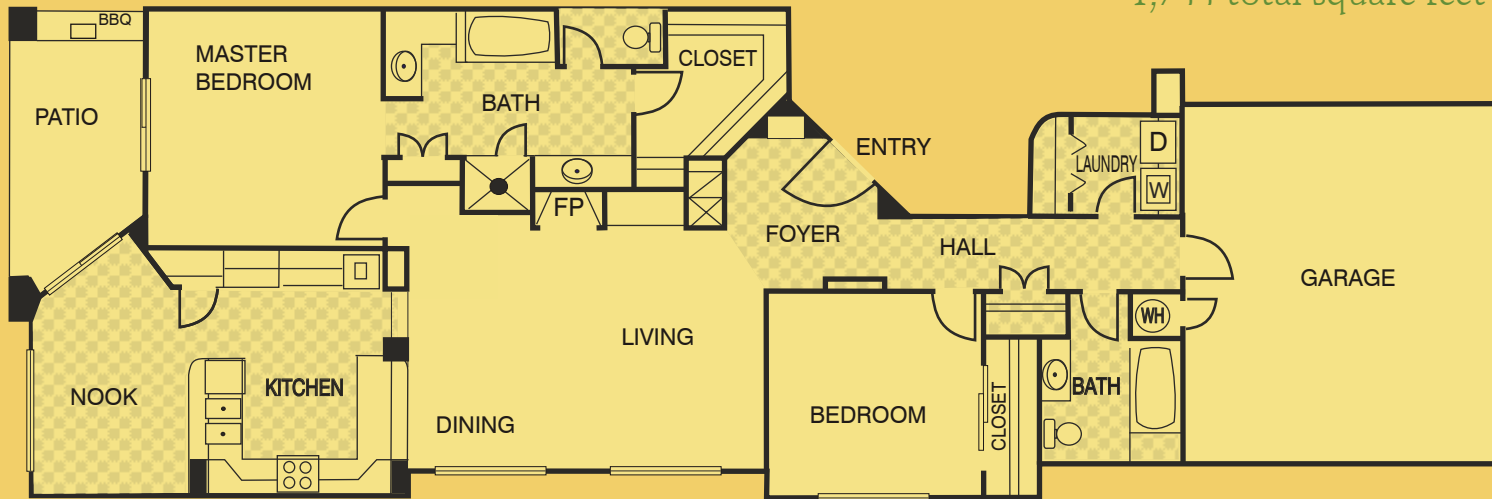
- Large covered patio with built-in natural gas BBQ
- Private yard
- Natural gas fireplace w/log kit
- Breakfast nook
- Built-in entertainment area
- Garden tubs and walk-in showers
- Dual vanity sinks in master bath



*"The future belongs to those who believe in the beauty of their dreams"*

# THE SANGRE DE CRISTO

2 Bedroom -2 Bath w/ attached 2-car garage  
1,744 total square feet of living space



## Special Features

- Large patio with built-in natural gas BBQ
- Grand foyer
- Private yard
- Exclusive architectural accents w/arches and furrdowns
- Natural gas fireplace w/log kit
- Breakfast nook
- Additional wall oven
- Built-in entertainment are
- Garden tubs and walk-in showers
- Dual vanity sinks in master bath

*"Home is where  
magical moments  
surround you."*





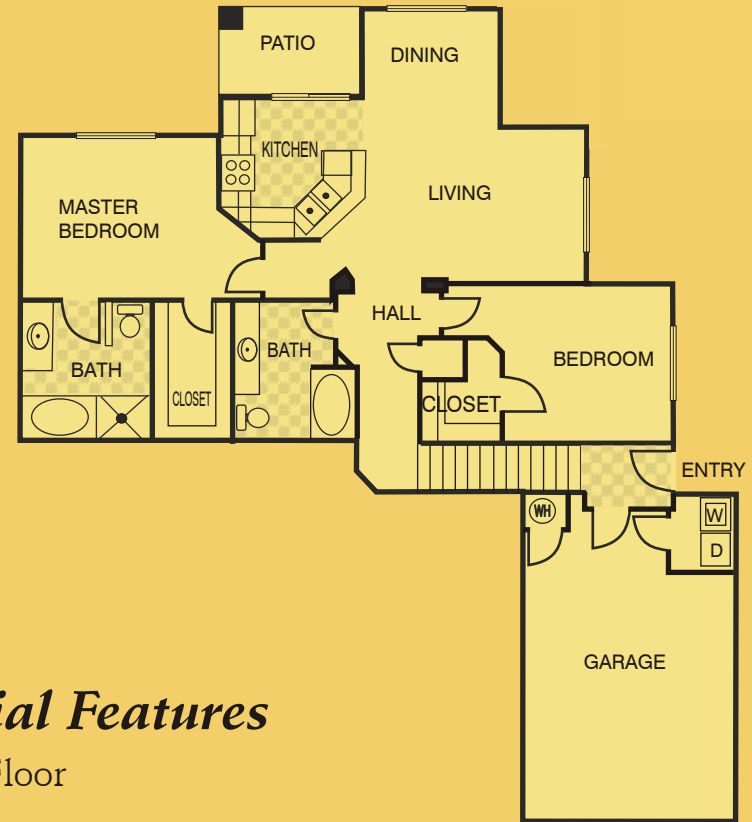
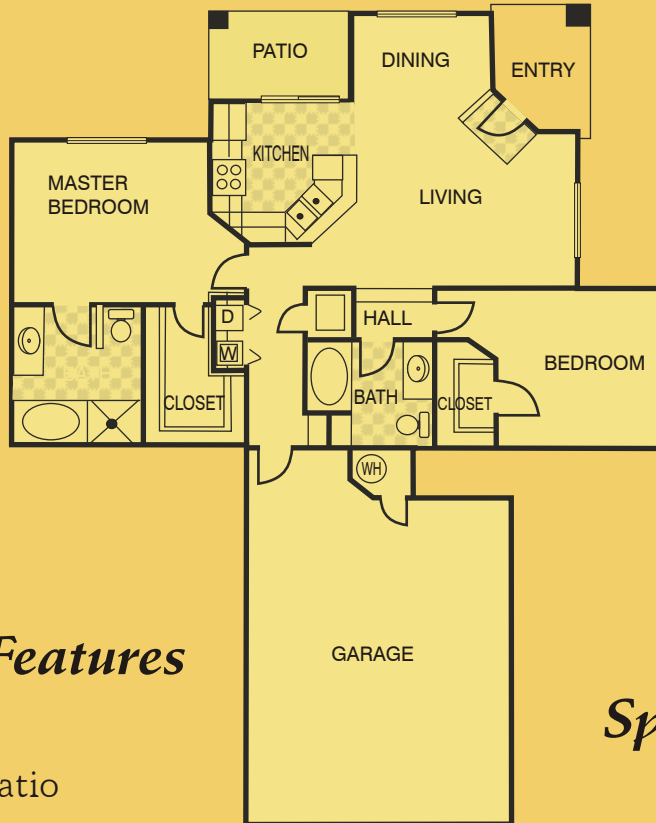
# THE LOS PIÑOS

2 Bedroom -2 Bath

**1st Floor** - 1,157 sq. ft. of living space w/ attached 2-car garage

**2nd Floor** - 1,246 sq. ft. of living space w/ attached 2-car garage

*"Here you may find a home.  
And at the same time, yourself."*



## Special Features

1<sup>st</sup> Floor

- Large patio
- Large walk-in closets
- Private yard
- Garden tubs and walk-in shower

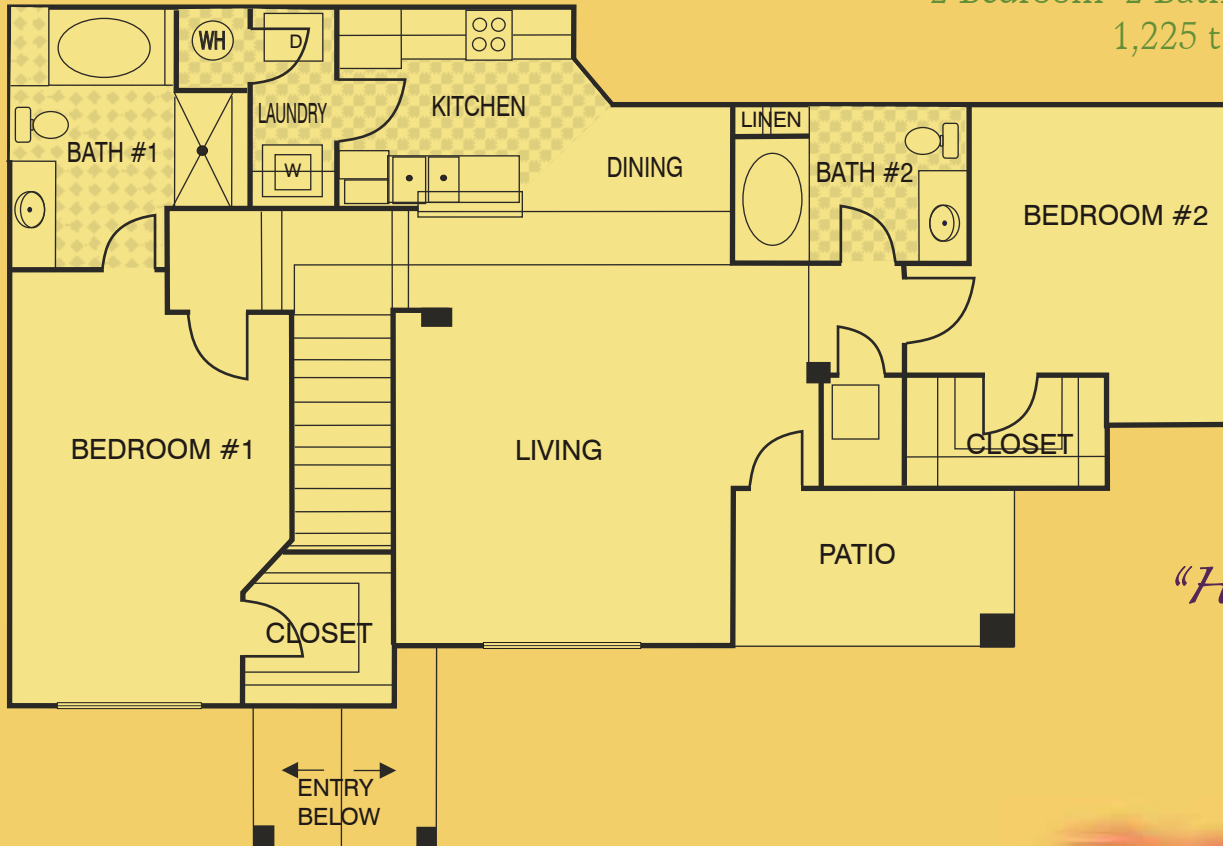
## Special Features

2<sup>nd</sup> Floor

- Bay window in living and dining
- Large walk-in bedroom closets
- Garden tubs and walk-in shower

# THE PECOS

2 Bedroom -2 Bath w/ attached oversized garage  
1,225 total square feet of living space



*"Here, there are moments when time actually does stand still"*

## Special Features

- Large walk-in closets
- Garden tubs and walk-in shower
- Large balcony





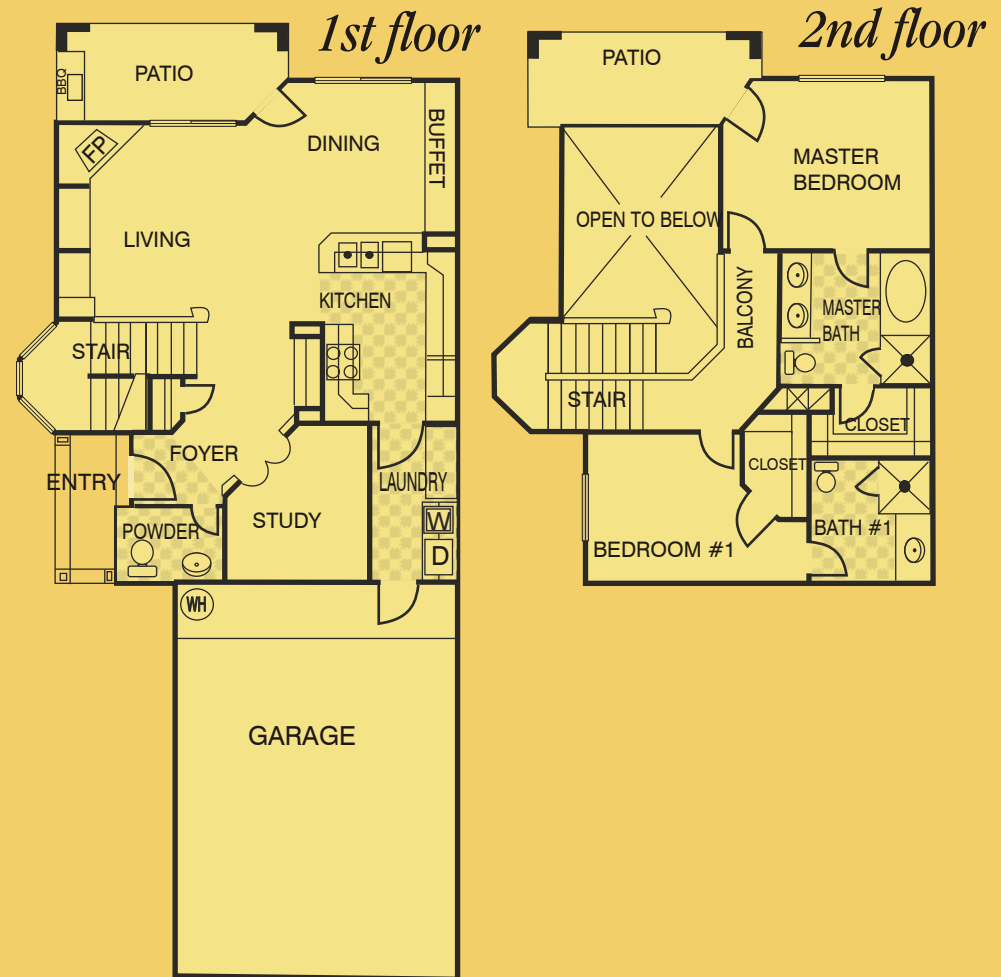
# THE MIMBRES

2 Bedroom -2.5 Bath townhome  
w/ study and attached 2-car garage  
1,640 total square feet of living space

*"A home is not a mere transient shelter;  
its essence lies in the personalities of  
the people who live in it."*

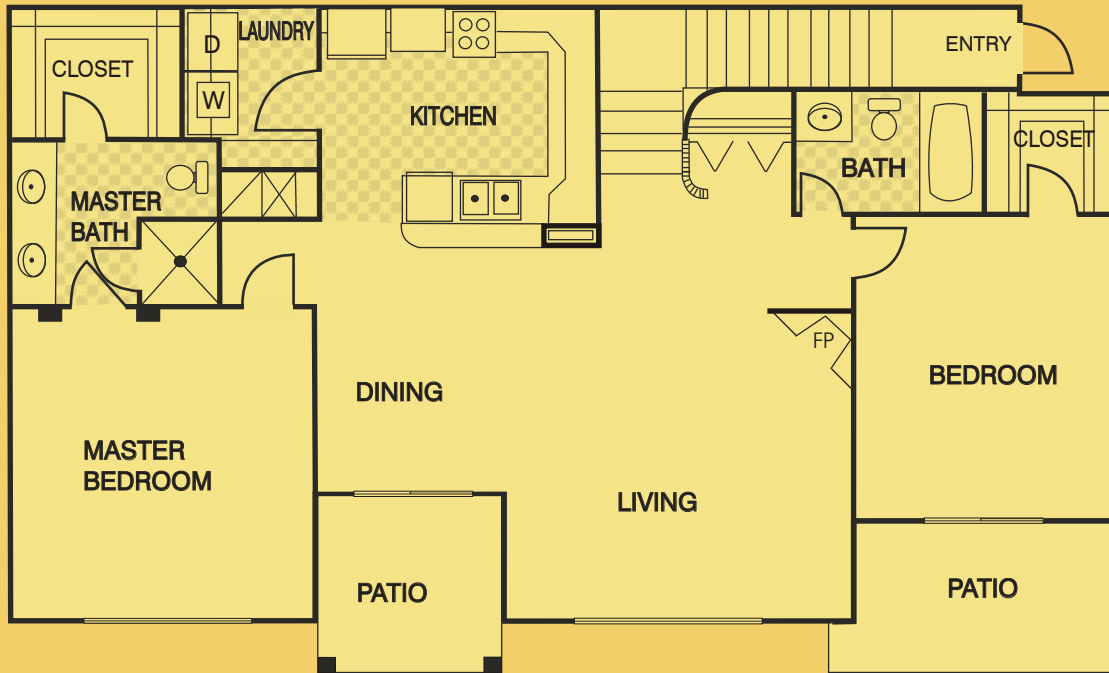
## Special Features

- Large Patio w/ built-in natural gas BBQ.
- Covered deck off master bedroom
- Guest powder room
- Private yard
- Walk-in closets
- Study
- Natural gas fireplace w/log kit
- Built-in entertainment area
- Oversized laundry room
- Dual vanity sinks in master bathroom
- Garden tub and walk-in showers
- Built-in buffets
- Private bathrooms off each bedroom



# THE GILA

2 Bedroom - 2 Bath w/ attached oversized garage  
1,253 total square feet of living space



## Special Features

- Large walk-in closets
- Two covered balconies
- Natural gas fireplace w/log kit
- Dual vanity sinks in master bathroom
- Garden tub and walk-in showers

*"A man travels the world over  
in search of what he needs and  
returns home to find it."*





# THE SACRAMENTO

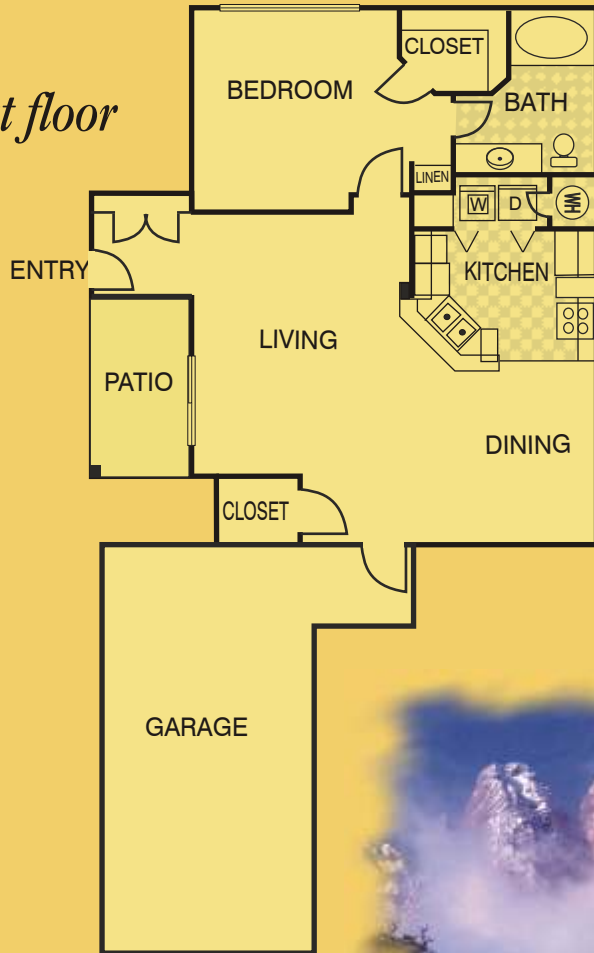
1 Bedroom - 1 Bath w/ attached oversized garage

**1st Floor** - 854 square feet of living space

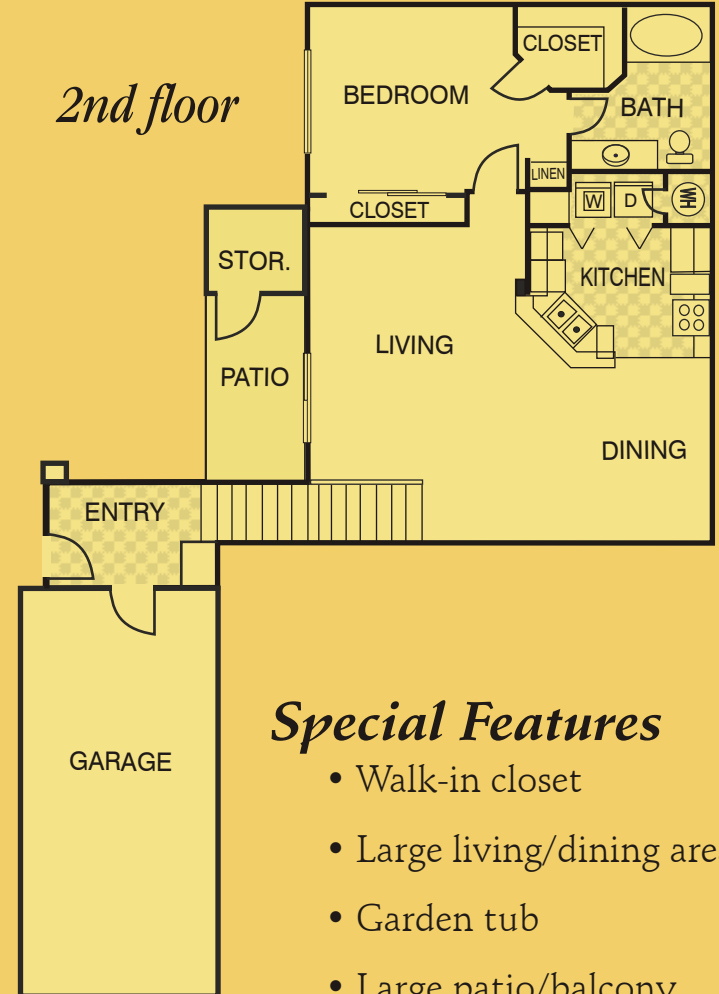
**2nd Floor** - 886 square feet of living space

*"The happiest moments in life  
are those created at home"*

*1st floor*



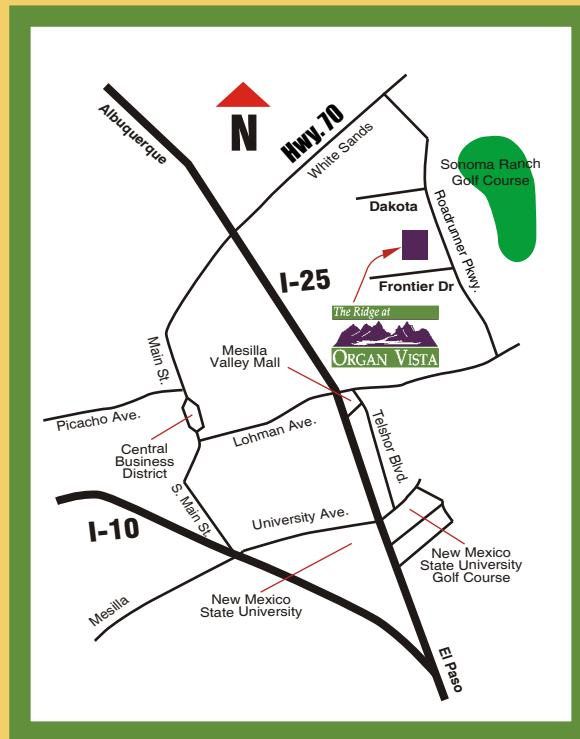
*2nd floor*



## *Special Features*

- Walk-in closet
- Large living/dining area
- Garden tub
- Large patio/balcony





*The Ridge at*



**ORGAN VISTA**

501 N. Roadrunner Parkway  
Las Cruces, NM 88011  
email: [OrganVista@aol.com](mailto:OrganVista@aol.com)

**575-528-0800**

**Fax: 575-521-9467**