



## PROPERTY HIGHLIGHTS

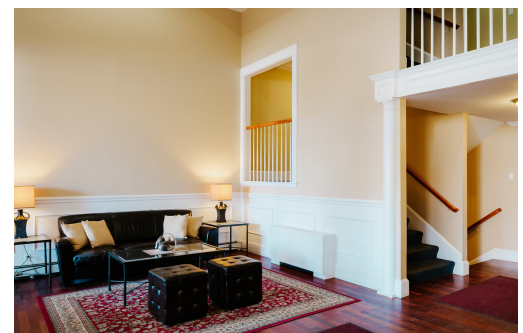
Ideally located off the Wampanoag Trail, East Shore offers some of the most spacious apartment homes in the area. The property consists of three buildings in a private setting. The units range from studios to two bedrooms and offer expansive closet space and storage. The complex has recently undergone renovations and features newly updated apartments, balconies, windows, and common areas as well as a new pool and fitness center. Just miles from Providence, East Providence is a city unto itself with a wide range of neighborhoods, commercial and retail areas. East Shore Apartments is situated at the east end of the city on or near the attractive Wampanoag Trail, which leads to the affluent towns of Barrington and Bristol and Rhode Island's picturesque inner coast.

### FEATURES & AMENITIES

- Heat and Hot Water Included Air Conditioning
- Walk-in Closets Balconies Storage
- On-Site Laundry Centers Ample Parking
- Fitness Center, In-ground Pool, BBQ Area Pet Friendly (restrictions apply)
- 24-hour Emergency Maintenance

### APARTMENT HOMES

Unit Style	Sq. Ft.	Apt. #	Rent
- Studio	400	___	\$ ___
- One Bedroom	675 - 1000	___	\$ ___
- Two Bedroom	1050	___	\$ ___
One Bath			
- Two Bedroom	1200	___	\$ ___
Two Bath			



**Phone:** 401.433.1512 | **Email:** LandingsMgr@taymil.com | **Web:** www.eastshoreapartments.com

**Hours:** Mon-Fri 9am-5pm & Sat-Sun 10am-4pm

Professionally managed by Taymil Partners LLC  
www.taymil.com