



Making Living Easy...

KENT FARM APARTMENT HOMES

Address: Gemini Drive, East Providence, RI 02914

Hours: Monday-Friday 9am-5pm, Saturday 10am-4pm

Email: KentFarmLeasing@taymil.com | **Phone:** 401.438.1576

Web: www.kentfarmapartments.com



PROPERTY HIGHLIGHTS

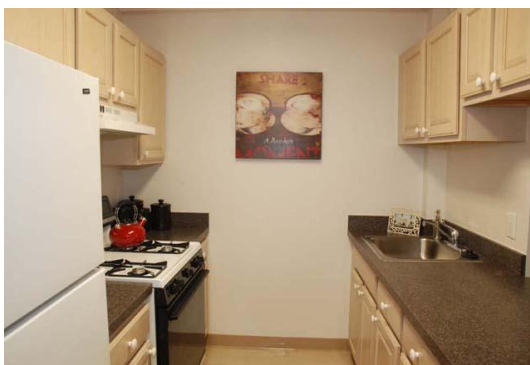
Located in East Providence, Rhode Island, Kent Farm Apartment Homes is conveniently located near several colleges such as Brown University, Providence College and RI School of Design along with parks like the Blackstone Park and Bold Point Park. This desirable location along with our 1-3 bedroom spaciouly designed garden/townhouse style floor plans and ample amenities makes choosing Kent Farm Apartment Homes as your home an easy decision. Keep in mind we offer the best value including all utilities in your monthly rent. Take a few moments to view our numerous floor plans and amenities and schedule a personalized tour online today.

FEATURES & AMENITIES

- Plank Flooring (select units)
- Elevator Access to Mid-Rise Buildings
- Laundry Facilities Throughout Property
- Free Surface Parking
- 24-Hour Fitness Center
- Club Room with Fully Equipped Kitchen
- Dog Park
- On-Site Management/Maintenance
- Rent Includes: Gas Heat/Cooking, Electricity,
- Water/ Sewer and Trash

APARTMENT HOMES

Unit Style	Sq. Ft.	Apt. #	Rent
• 1 Bedroom	_____	_____	\$ _____
• 2 Bedroom/1 Bath	_____	_____	\$ _____
• 3 Bedroom/1.5 Baths	_____	_____	\$ _____
• 2 Bedroom/1 Bath	_____	_____	\$ _____
Town Home			
• 3 Bedroom/1 Bath	_____	_____	\$ _____
Town Home			



Professionally managed by Taymil Partners LLC
www.taymil.com