



RIVERWALK



Welcome to Riverwalk Apartments! Our Riverdale community is nestled on the gorgeous South Bank of the Arkansas River and next door to Murray Park. We are just minutes from downtown with convenient access to Cantrell Road, I-30, I-430, I-630, and I-40. Our residents enjoy unparalleled scenic views of the riverfront directly from our riverside pool pavilion with river deck, and picnic areas with grills. Our amenity package also boasts a second pool with pavilion, lighted tennis court, 24/7 fitness center, and free WiFi throughout the clubhouse, adjacent pool area and Cyber Café. Our gorgeous apartments feature oversized walk-in closets, fully-equipped gourmet kitchens with designer finishes, full-sized washers and dryers and much more. Please come by for a visit today!

RIVERWALK APARTMENTS

2400 Riverfront Drive
Little Rock, AR 72202

501.664.4700 tel
501.664.3622 fax

Office Hours:
Mon-Fri: 9am - 6pm
Saturday: 10am - 5pm

RiverwalkLR.com



RIVERWALK

APARTMENT FEATURES

Redesigned Kitchens*
Fully Equipped Kitchens
Breakfast Bar
Walk-in Closets
Central Heat & Air
Large Bedrooms
Washer & Dryer
9 Foot Ceilings
Two Inch Blinds*
Vaulted Ceilings*
Track Lighting*
Brushed Nickel Accents*
Private Patio or Balcony
Extra Storage
Wood-Burning Fireplace*
High Speed Internet Access
Digital Cable
Arkansas Riverviews*
Ceiling Fans
Covered Parking
Handicap Accessible

* Available in select units

PET POLICY

Dogs and cats welcome. Breed restrictions, non-refundable pet fees, and monthly pet rent will apply. Contact property for details.



COMMUNITY FEATURES

Dog Park
24-hr Emergency Maintenance
Clubhouse
Community Socials
Tennis Courts
Covered Parking
Controlled Access Gates
Package Acceptance
Pet Stations
Picnic Area with BBQ Grills
Two Resort Style Pools
Pool Pavilion with Sundeck
Cyber Café with WiFi Now Featuring Starbucks!
Preferred Employer Program
Flexible Lease Terms
24/7 Fitness Center
Corporate Housing Available
Short Term Leases Available
Guest Apartments Available

Minutes from I-630/30/40/430
Minutes from Riverfront Jogging



SOMERSET
APARTMENT
MANAGEMENT

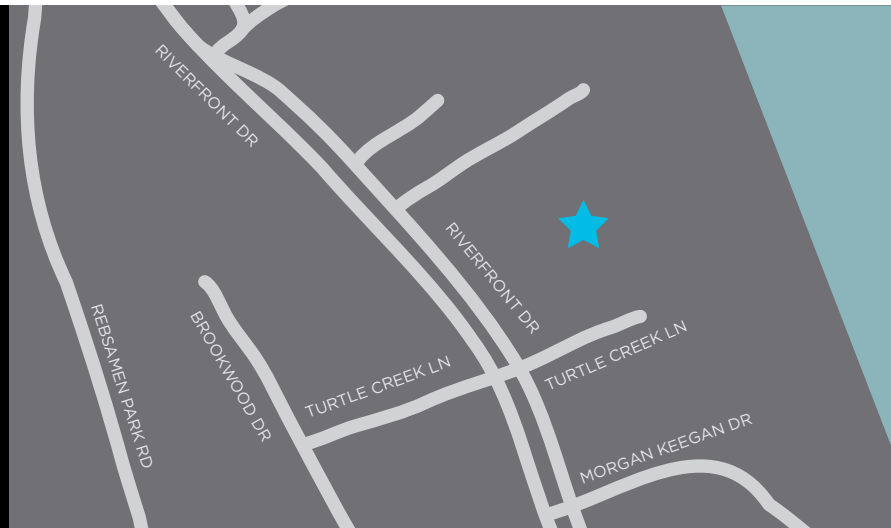
RIVERWALK APARTMENTS

2400 Riverfront Drive
Little Rock, AR 72202

501.664.4700 tel
501.664.3622 fax

Office Hours:
Mon-Fri: 9am - 6pm
Saturday: 10am - 5pm

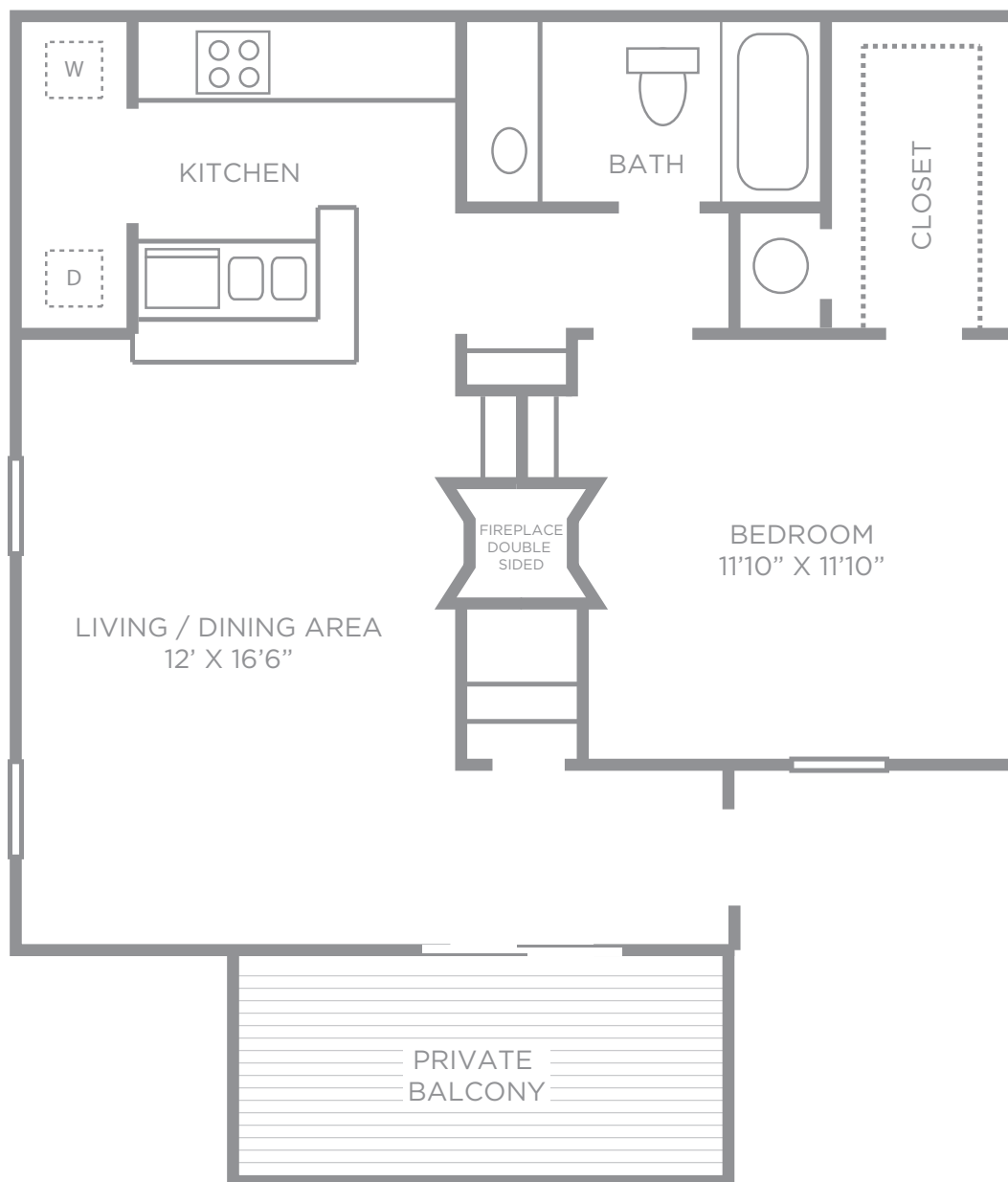
RiverwalkLR.com



SEAPINE

ONE BEDROOM
ONE BATH

SQUARE FT: 701 PRICE: _____



This floor plan representation is not to scale and all dimensions are approximate.



RIVERWALK

LOCATION

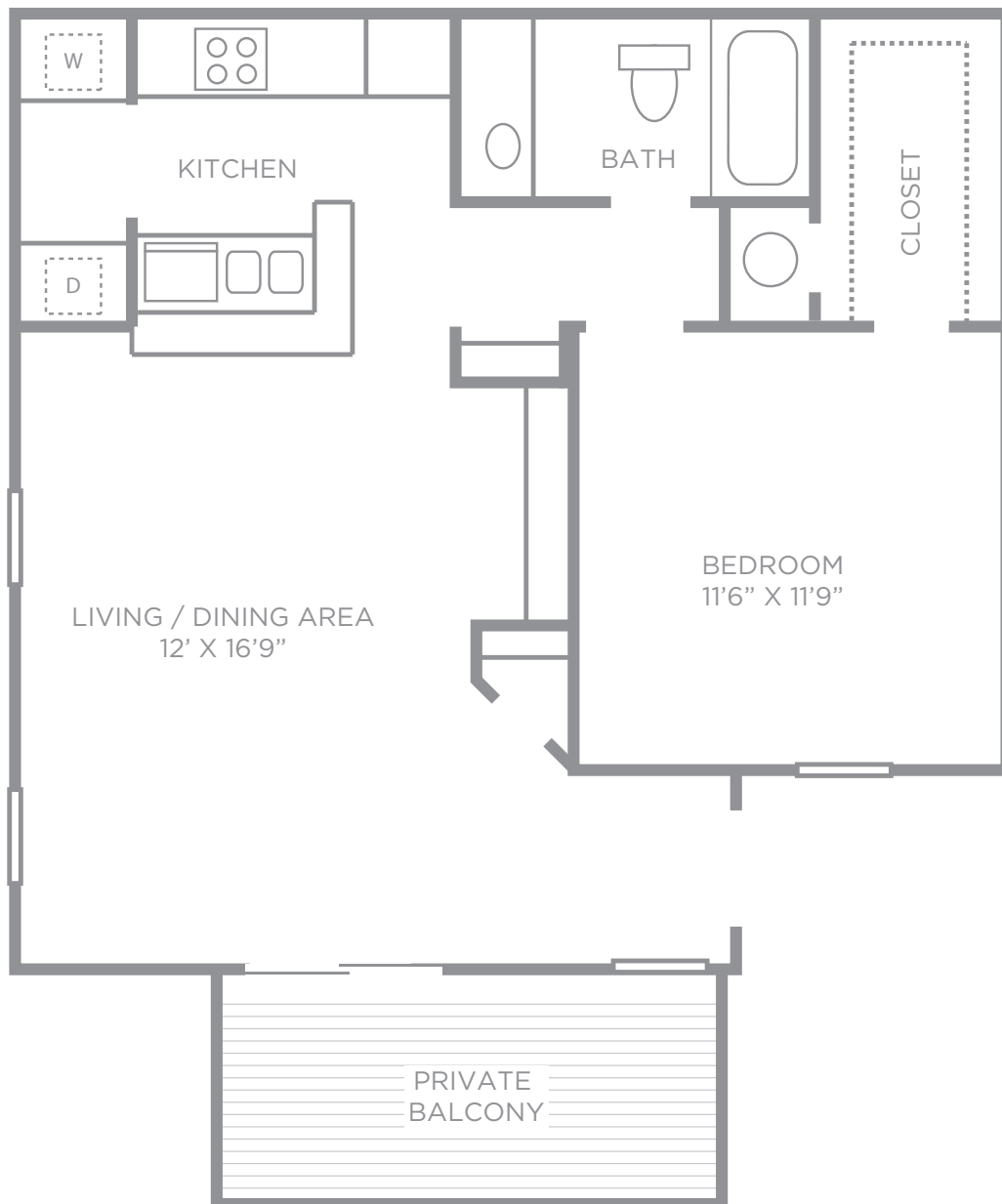
2400 Riverfront Drive
Little Rock, AR 72202

501.664.4700 [tel](tel:501.664.4700)
501.664.3622 [fax](tel:501.664.3622)
RiverwalkLR.com

ALPINE

ONE BEDROOM
ONE BATH

SQUARE FT: 678 PRICE: _____



This floor plan representation is not to scale and all dimensions are approximate.



RIVERWALK

LOCATION

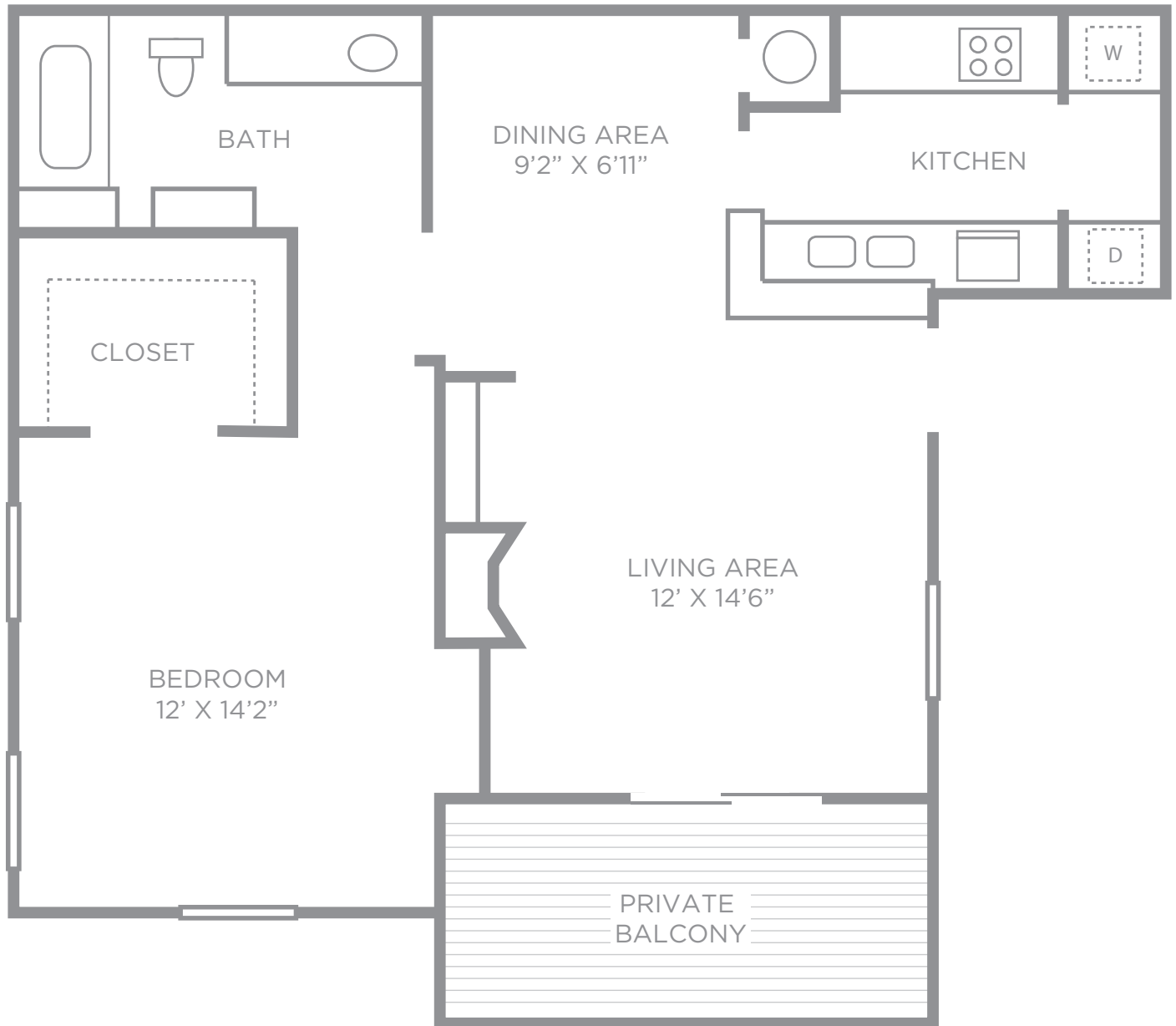
2400 Riverfront Drive
Little Rock, AR 72202

501.664.4700 [tel](tel:501.664.4700)
501.664.3622 [fax](tel:501.664.3622)
RiverwalkLR.com

BRECKENRIDGE

ONE BEDROOM
ONE BATH

SQUARE FT: 768 PRICE: _____



This floor plan representation is not to scale and all dimensions are approximate.



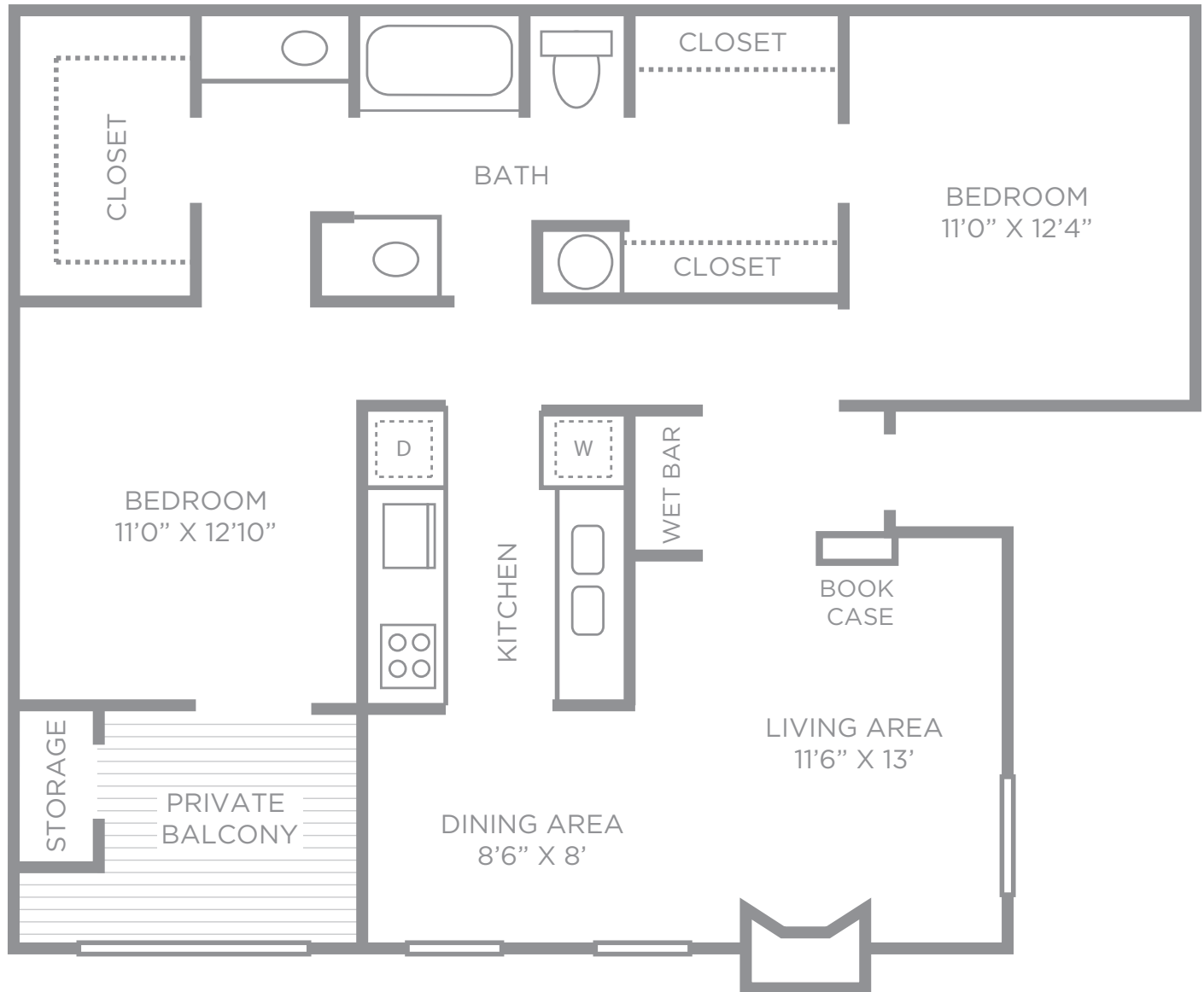
RIVERWALK

LOCATION

2400 Riverfront Drive
Little Rock, AR 72202

501.664.4700 [tel](tel:501.664.4700)
501.664.3622 [fax](tel:501.664.3622)
RiverwalkLR.com

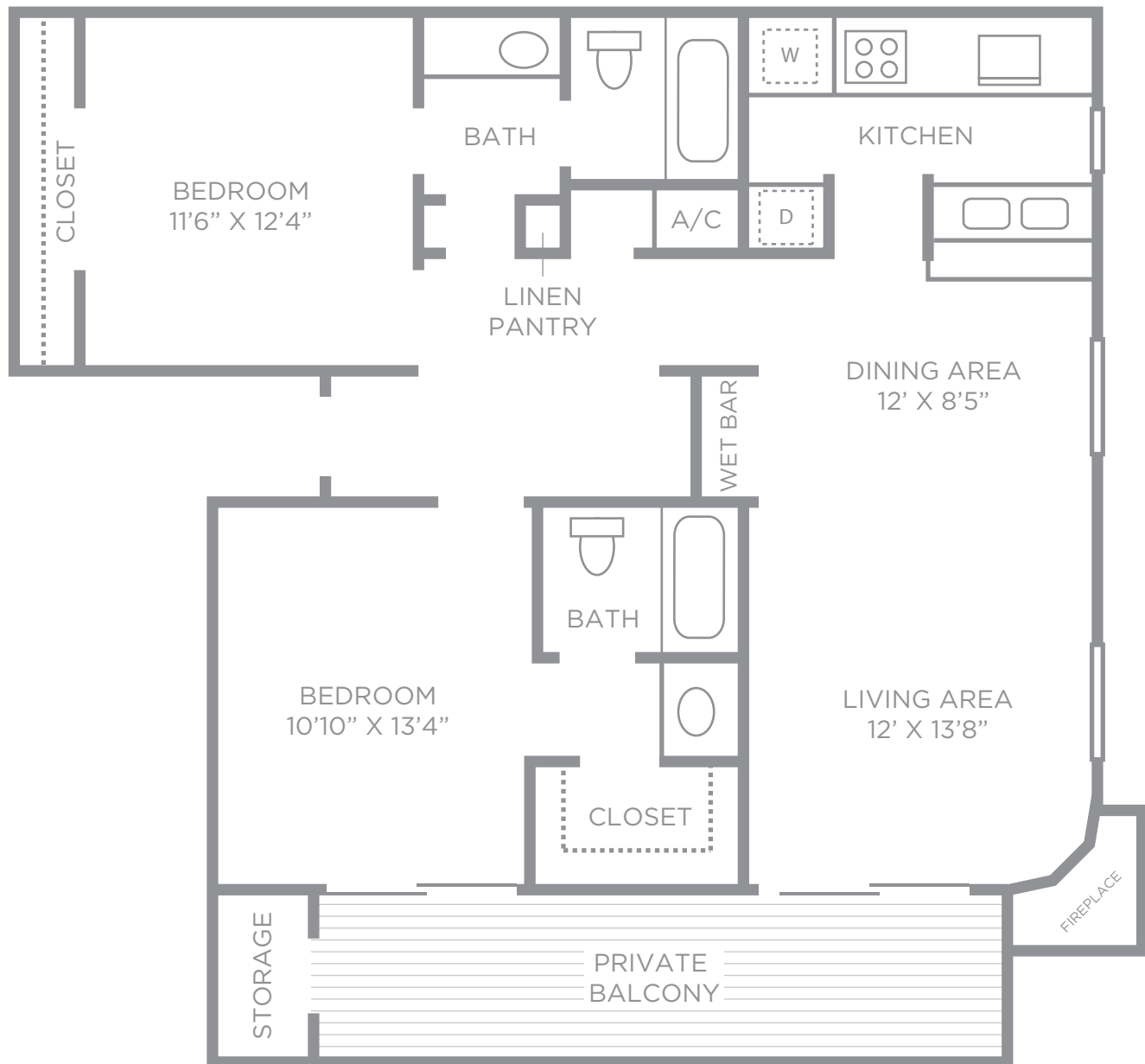
SQUARE FT: 1,015 PRICE: _____



This floor plan representation is not to scale and all dimensions are approximate.

**RIVERWALK****LOCATION**2400 Riverfront Drive
Little Rock, AR 72202501.664.4700 [tel](tel:501.664.4700)
501.664.3622 [fax](tel:501.664.3622)
RiverwalkLR.com

SQUARE FT: 1,085 PRICE: _____



This floor plan representation is not to scale and all dimensions are approximate.



RIVERWALK

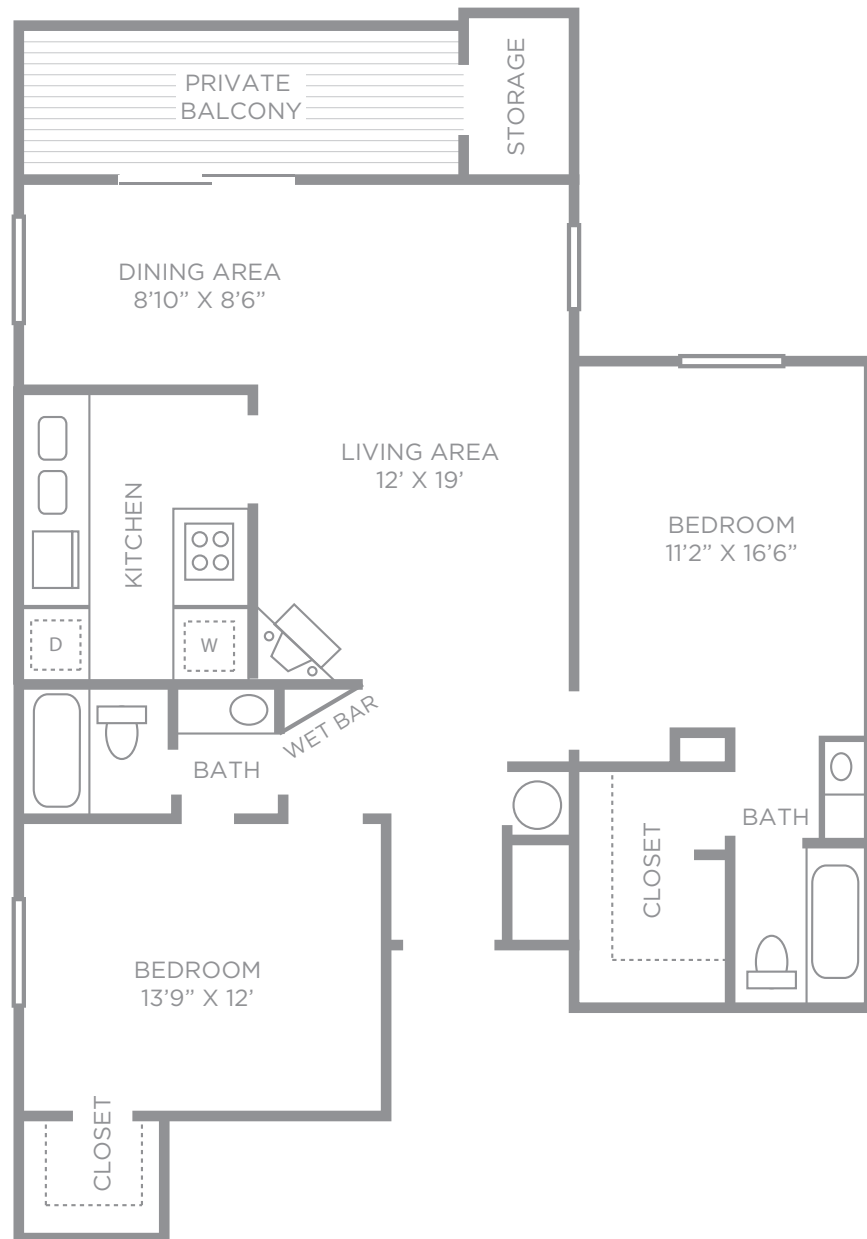
LOCATION

2400 Riverfront Drive
Little Rock, AR 72202501.664.4700 tel
501.664.3622 fax
RiverwalkLR.com

WIMBLEDON

TWO BEDROOM
TWO BATH

SQUARE FT: 1,140 PRICE: _____



This floor plan representation is not to scale and all dimensions are approximate.



RIVERWALK

LOCATION

2400 Riverfront Drive
Little Rock, AR 72202

501.664.4700 [tel](tel:501.664.4700)
501.664.3622 [fax](tel:501.664.3622)
RiverwalkLR.com

RIVERWALK

PROPERTY MAP



RIVERWALK

LOCATION

2400 Riverfront Drive
Little Rock, AR 72202

501.664.4700 [tel](tel:501.664.4700)
501.664.3622 [fax](tel:501.664.3622)
RiverwalkLR.com