

A C A C I A

On Santa Rosa Creek

A P A R T M E N T S



Wine Country has changed.

It's not just scenic. It reflects a more urban, contemporary flow and scene. At Acacia on Santa Rosa Creek, we have a vision that incorporates today's exciting lifestyles without sacrificing the timeless, picturesque surroundings you love. Our inviting community is full of luxurious amenities. Inside our residences, you'll be just as pampered. Designer features, modern touches and spacious plans will keep up with you day to night. Altogether, living at Acacia on Santa Rosa Creek allows you the best of everything.













SITE PLAN

SONOMA HIGHWAY 12



Legend

- | | | | | | | | |
|---|-------|--|------------|--|--|---|-----------------------|
|  | Alder |  | Cottonwood |  | Ficus |  | Douglas Fir 1st Floor |
|  | Birch |  | Elm |  | Douglas Fir 1st Floor
Guava 2nd & 3rd Floor |  | Carports |
|  | Mail | 330 - Third Floor | | | | | |
|  | Trash | 320 - Second Floor | | | | | |
| | | 310 - First Floor | | | | | |



Neighborhood Distinctions

- Adjacent to the Santa Rosa Creek Trail and Trail Head
- Garage with Automatic Opener or Reserved Covered Parking
- Resort-style Pool and Spa
- Clubhouse with Large Screen TV, Surround Sound System and Kitchen
- Business Center
- Fitness Center with Cardio and Weight Training Equipment
- Outdoor Living Area with BBQ
- Playground
- On-site Car Wash Area
- Planned Resident Activities
- Customer Care Concierge Services
- Guest Suite Available
- Fully Furnished Corporate Suites Available
- Professional On-site Management and Maintenance



Interior Luxuries

- Nine-foot Ceilings
- Designer Paint
- Raised Panel Doors with Lever Hardware
- Maple Cabinetry in Kitchen and Baths
- Whirlpool Kitchen Appliances including Gas Range, Microwave Oven and Multi-cycle Dishwasher
- Breakfast Counter and Kitchen Pantry
- Frost-free Refrigerator with Ice Maker
- Full-sized Whirlpool Washer/Dryer
- Oversized Hourglass-Shaped Bathtubs
- Walk-in Closet with Single and Double Poled Organizers
- Built-in Computer Desk*
- Central Heat and Air Conditioning
- Wired for Master Bedroom Ceiling Fan
- High-speed Internet Access Available
- Multiple Phone and Cable Lines
- Huge Private Patio or Balcony
- Pets Welcome

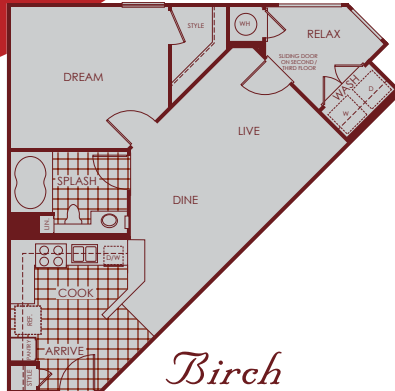
*Select Apartment Homes

FLOOR PLANS



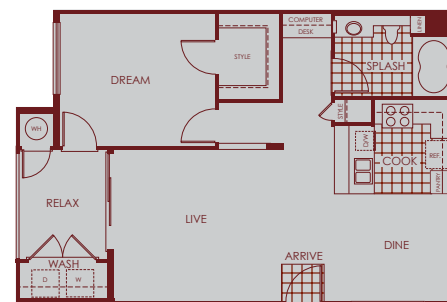
Alder

Jr. One Bedroom, One Bath
630 Square Feet
First, Second and Third Floor
with Carport



Birch

Jr. One Bedroom, One Bath
630 Square Feet
First, Second and Third Floor
with Carport



Cottonwood

One Bedroom, One Bath
763 Square Feet
First, Second and Third Floor
with Carport



Douglas Fir

One Bedroom, One Bath
797 Square Feet
First Floor with Direct
Access Garage





Ficus

Two Bedroom, Two Bath
1,042 Square Feet
First, Second and Third Floor
with Carport



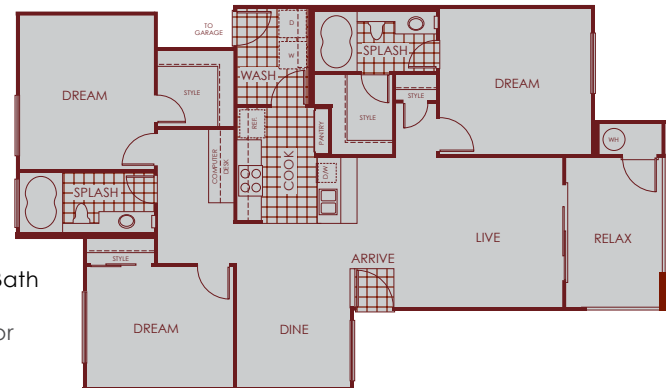
Guava

Two Bedroom, Two Bath
1,111-1,146 Square Feet
Second and Third Floor
with Garage



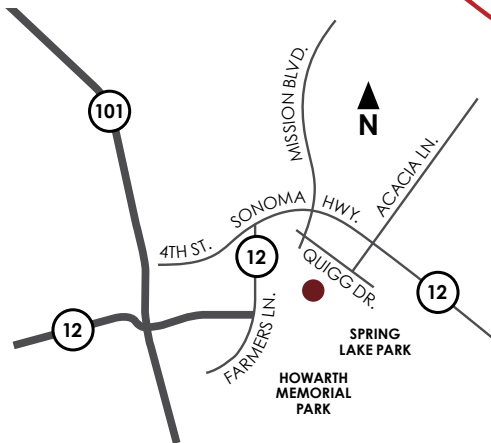
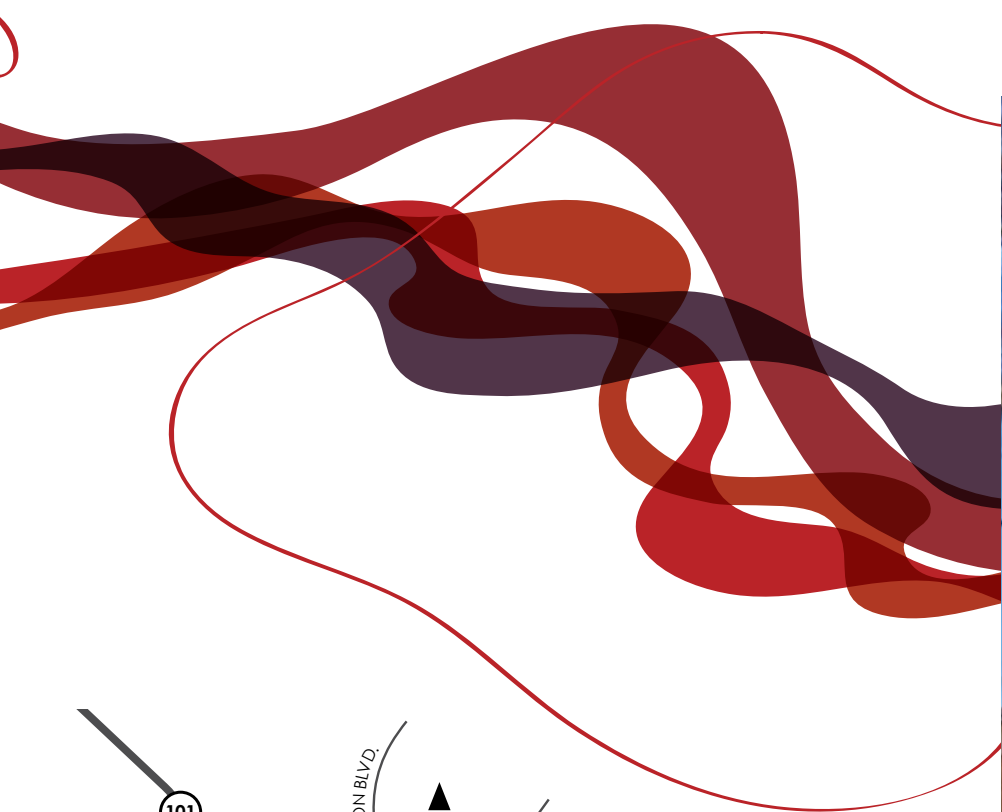
Elm

Two Bedroom, One Bath
1,036 Square Feet
First, Second and Third Floor
with Carport



Hickory

Three Bedroom, Two Bath
1,271 Square Feet
Second and Third Floor
with Garage



ACACIA

On Santa Rosa Creek

APARTMENTS

4656 Quigg Drive
Santa Rosa, CA 95409
707-537-7501
fax 707-537-7511

LiveAcacia.com



design by p11creative / p11.com