

ca | yps | so



APARTMENTS AND LOFTS





Transport yourself today –

without ever leaving home. Welcome to Calypso — a lavish community of modern apartments and lofts with a tropical twist. The soothing resort-style amenities we've chosen will surround you with a feeling of escape. Enjoy the resort style swimming pool, lounge in the decadent poolside cabanas (complete with Wi-Fi), and work your body and clear your mind in our on-site fitness center complete with cardio and strength training equipment.

Our interiors are a vacation from the status quo. Stainless steel appliances, granite countertops, 9 ft. ceilings, designer touches and much more make your home a stylish and smart place to share with family and friends. Yet you'll still be close to civilization: amazing shopping, dining, and entertainment.

Calypso Apartments & Lofts.

A true departure from the usual...



Site Plan

ALTON PARKWAY

JAMBOREE ROAD



CALYPSO

Neighborhood Distinctions

- Controlled access parking garage
- Resort-style pool and spas with cabanas and Wi-Fi
- Clubhouse with plasma TVs, Wi-Fi lounge and gaming tables
- Fitness center with cardio and weight training equipment
- Elevators
- Additional storage available
- Resident services
- Short-term corporate housing
- Professional on-site maintenance and management
- Putting green
- Zen garden
- Outside fireplace and lounge
- Meditation zone
- Pets welcome

Legend

- PLAN A** ANTIGUA
- PLAN B** BARBADOS
- PLAN C** CURACAO
- PLAN D** DOMINICA
- PLAN E** ST. BARTS
- PLAN F** FIJI
- PLAN G** GRAND CAYMAN
- PLAN H** ST. CROIX



STAIRS



ELEVATOR

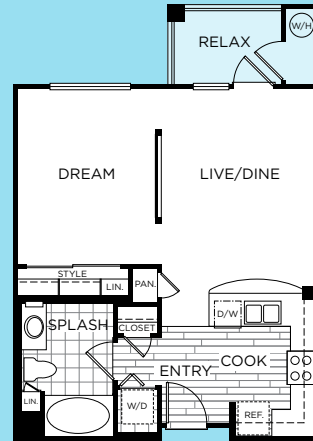


TRASH

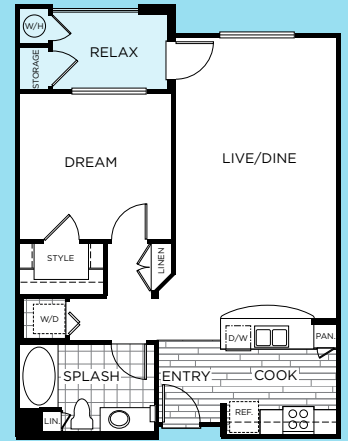
Interior Luxuries

- Studio, one and two bedrooms, some with lofts
- Radius corners and nine-foot ceilings
- Designer paint and lighting
- Wood flooring at entry and kitchen
- Granite countertops
- Maple wood cabinetry with brushed chrome hardware
- Oversized windows with 2" horizontal window treatments
- Raised panel doors with lever hardware
- Breakfast counter and kitchen pantry
- Stainless steel appliances including gas range
- Frost free refrigerator with ice maker
- Full-sized washer/dryer
- Roman shaped bathtubs
- Walk-in closet or mirrored wardrobe with single and double poled organizers
- Intrusion alarms
- Central heat and air conditioning
- High-speed internet access available
- Multiple phone and cable lines
- Huge private patio or balcony

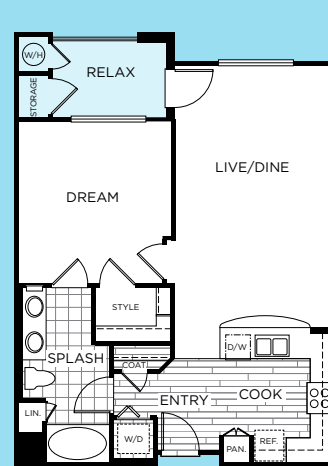




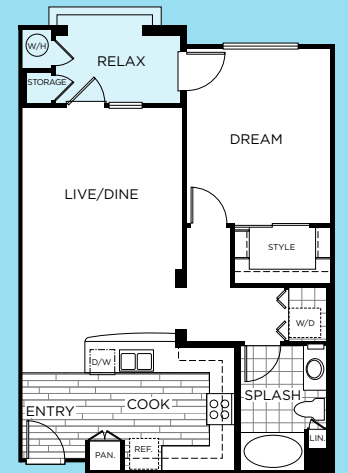
Plan A Antigua
 Studio, One Bath
 605 Sq. Ft.



Plan B Barbados
 One Bedroom, One Bath
 786 Sq. Ft.

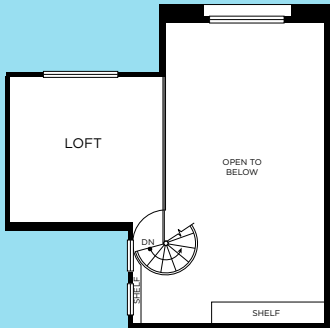


Plan C Curacao
 One Bedroom, One Bath
 786 Sq. Ft.

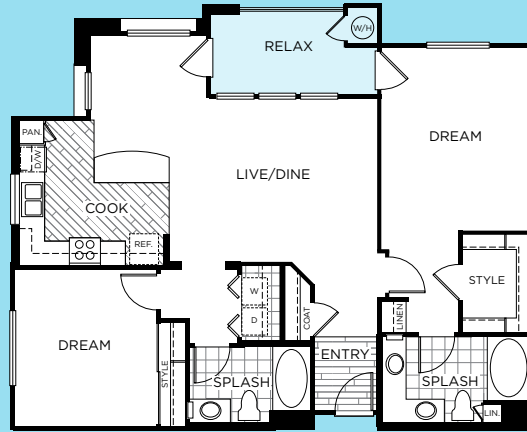


Plan D Dominica
 One Bedroom, One Bath
 901 Sq. Ft.

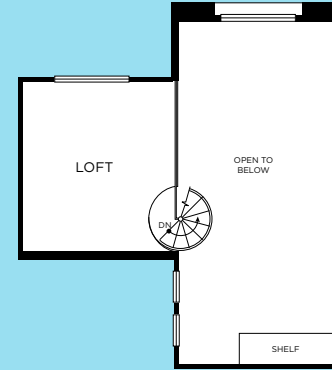
Floor Plans



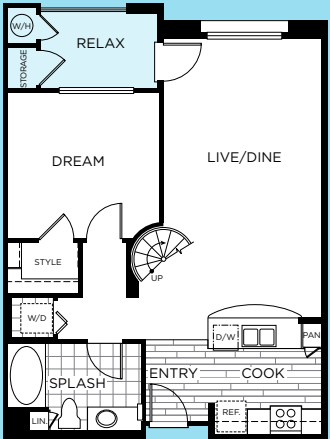
Second Floor



Plan F Fiji
Two Bedroom, Two Bath
1,214 Sq. Ft.

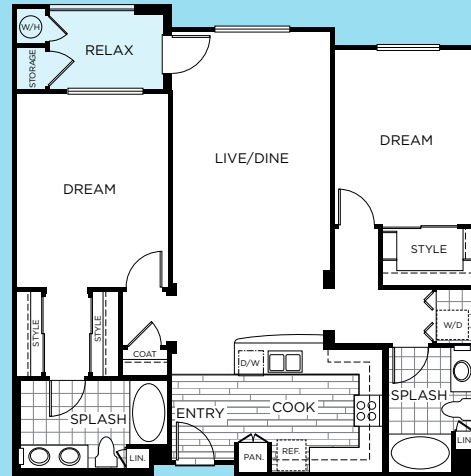


Second Floor

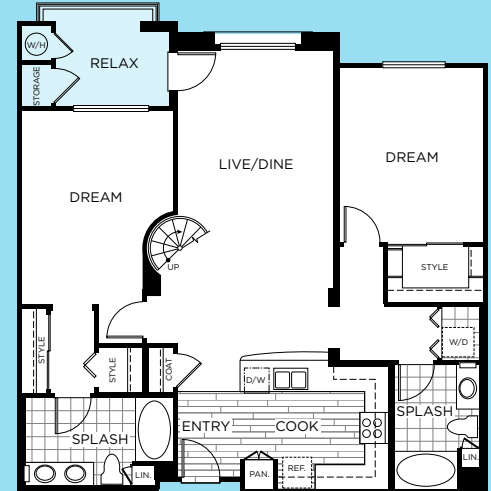


First Floor

Plan E St. Barts
One Bedroom, One Bath + Loft
915 Sq. Ft.



Plan G Grand Cayman
Two Bedroom, Two Bath
1,271 Sq. Ft.



First Floor

Plan H St. Croix
Two Bedroom, Two Bath + Loft
1,448 Sq. Ft.

Calypso

APARTMENTS AND LOFTS

LEASING CENTER

2801 Alton Parkway #104

Irvine, CA 92606

949-724-1722

livecalypso.com



 **BEHRINGERHARVARD**
RESIDENTIAL

