



**FITZHUGH** URBAN FLATS

A modern living room with a dark leather sofa, red armchairs, and a dining area in the background. The room features a mix of textures and colors, including a patterned ottoman, a wooden coffee table, and a dining table with chairs. The background shows a kitchen area with a tiled backsplash and a dining table with chairs. The overall atmosphere is warm and contemporary.

# MEDIOCRITY, THERE'S THE DOOR. BUH-BYE.

It's time to bust out bigger ideas, 21st century options, and nicer stuff. Basically, everything you've always wanted in apartment living and haven't found — until now. At Fitzhugh Urban Flats, we believe you are exceptional. You deserve open concept floor plans, high-end finishes, contemporary style and lavish amenities. You deserve to feel absolutely amazing about where you live every single day, in every single detail. And you can. We cordially invite you to join the revolution and Think Outside the Knox...





URBAN CITY STYLE



# CONTEMPORARY

## SITE PLAN



### THE NATURAL

One Bedroom / One Bath  
691 Sq. Ft.



### THE SOHO

One Bedroom / One Bath  
736 Sq. Ft.



### THE ASBURY

One Bedroom / One Bath  
800 Sq. Ft.



### THE VIEW

One Bedroom / One Bath  
800 Sq. Ft.



### THE GINKGO

One Bedroom / One Bath  
938 Sq. Ft.



### THE SPRINGS

One Bedroom / One Bath  
946 Sq. Ft.



### THE ZEPHYR

One Bedroom / One Bath  
840 Sq. Ft.



### THE COSMOS

Two Bedroom / Two Bath  
1,115 Sq. Ft.



### THE GINKGO ALT

One Bedroom / One Bath  
1,164 Sq. Ft.



### THE WALDEN

Two Bedroom / Two Bath  
1,275 Sq. Ft.



### THE UTOPIA

Two Bedroom / Two Bath  
1,325-1,456 Sq. Ft.



### THE ODYSSEY

Two Bedroom / Two Bath  
1,555 Sq. Ft.

# COMMUNITY

ALCOTT STREET



NORTH FITZHUGH AVENUE



## COMMUNITY ATTRIBUTES

- **NOTICE:** Upscale atmosphere and lush landscaping throughout
- **WORK:** Business Haus — State of the art business center with computers, internet, printers, scanner, fax, and conference room
- **GATHER:** Stylish Clubhouse perfect for private parties
- **WATCH:** Media Center with two 50" hi-def plasma TVs with Playstation, Xbox 360, DVD player, DirecTV and Wii
- **PLAY:** Gaming Hub — billiards, shuffleboard and foosball
- **SWEAT:** 1,800 square feet, Fully-equipped Fitness Center — offering free monthly classes that change to keep your body guessing and optimize results
- **BASK:** 3 Resort-style pools with tanning ledges and stainless steel gas grills for optimal entertaining
- **CONNECT:** Wi-Fi Access at pool locations and in common areas near leasing center
- **BREATHE:** Beautiful garden courtyards and lounging alcoves
- **RISE:** Elevated party deck with outdoor Grilling Areas
- **RELAX:** Limited Access Gates
- **PARK:** Gated parking garage with direct access to your floor
- **EXPLORE:** Centrally located — Near Knox/Henderson, West Village, The Arts District and more
- **INDULGE:** Close to dining, shopping and entertainment
- **DRIVE:** Easy access to major highways
- **BARK PARK:** A special place for your furry friends to play

LAVISH BEAUTIFUL FLATS



## APARTMENT PERSONALITY

- Open concept, ultra-spacious floor plan (another perk of urban living)
- Faux hardwood floors in dining/living/kitchen\*
- Ceramic tile entry\*
- Granite countertops and hardwood cabinets
- Faux stainless steel appliances
- Glass cooktops and stainless steel sink
- Move-in ready appliance package: Dishwasher, frost-free Refrigerator with icemaker and full size Microwave/Vent Hood Combination
- Combination work island/breakfast bar\*
- Indulgent Roman bathtubs (we told you we were different)
- Air-conditioning along with ceiling fans in living and bedrooms
- Walk-in closets with built-ins
- Washer/dryer connections (rental available)
- Storage closets on patio/balconies (individual storage units also available)
- Intrusion alarms
- Pets welcome

\*Select Plans

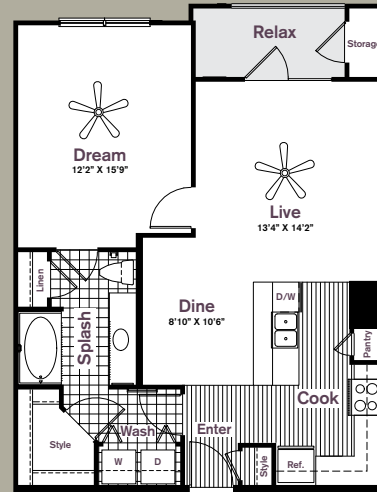
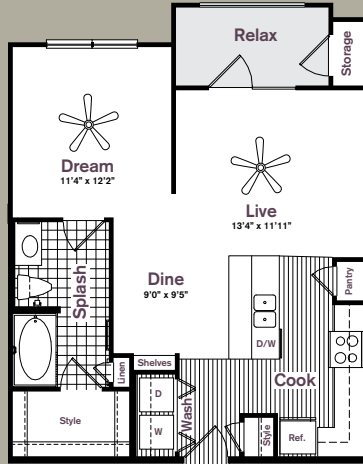


# FLOOR PLANS

## ONE BEDROOM

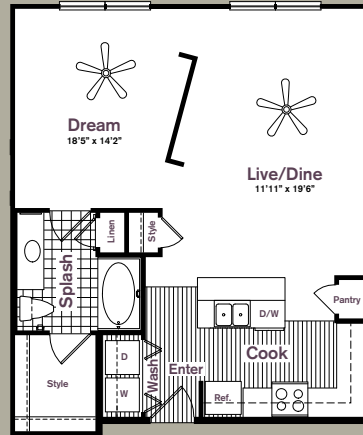
### THE NATURAL

1 Bedroom, 1 Bath  
691 Sq. Ft.



### THE ASBURY

1 Bedroom, 1 Bath  
800 Sq. Ft.

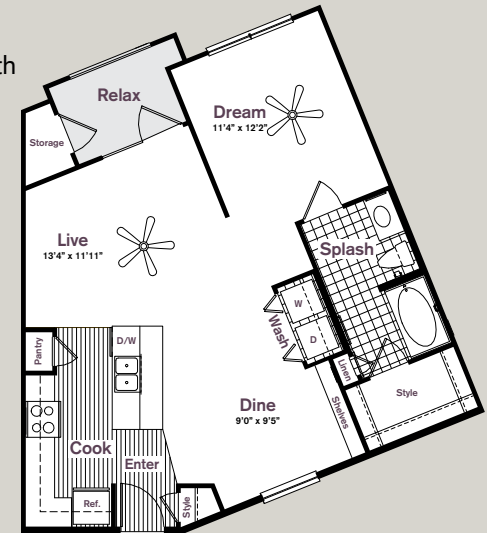


### THE VIEW

1 Bedroom, 1 Bath  
800 Sq. Ft.

### THE SOHO

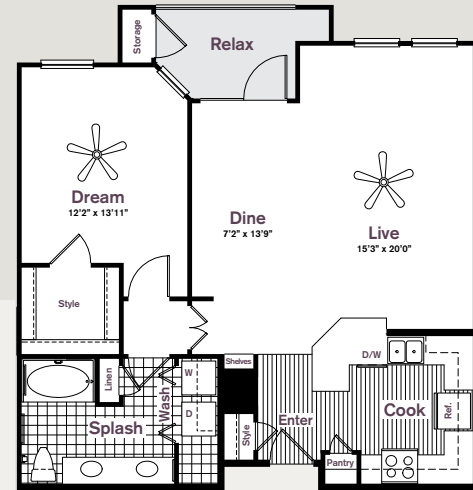
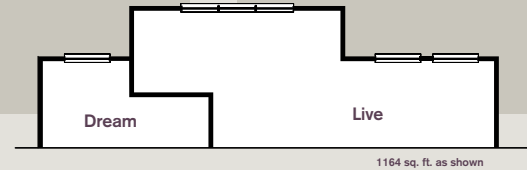
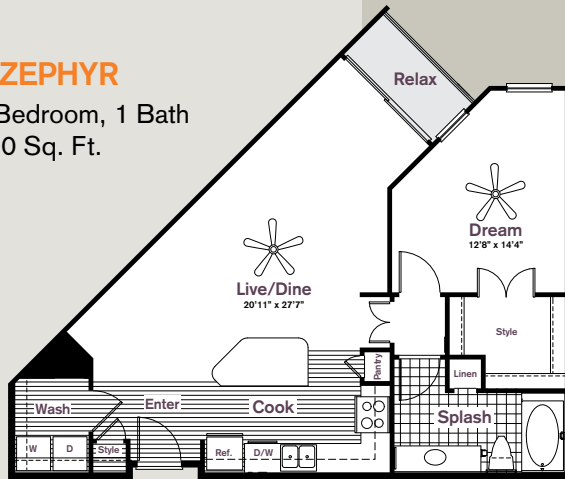
1 Bedroom, 1 Bath  
736 Sq. Ft.





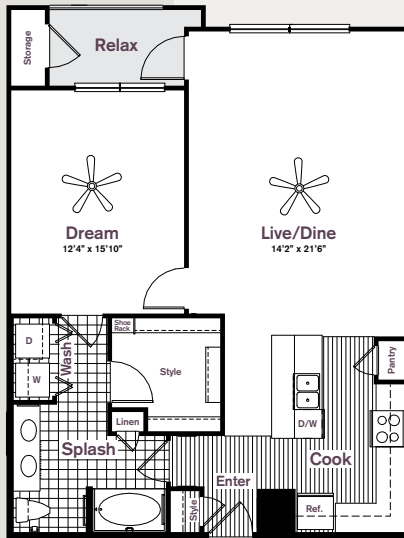
## THE ZEPHYR

1 Bedroom, 1 Bath  
840 Sq. Ft.



## THE GINKGO

1 Bedroom, 1 Bath  
938-1,164 Sq. Ft.



## THE SPRINGS

1 Bedroom, 1 Bath  
946 Sq. Ft.

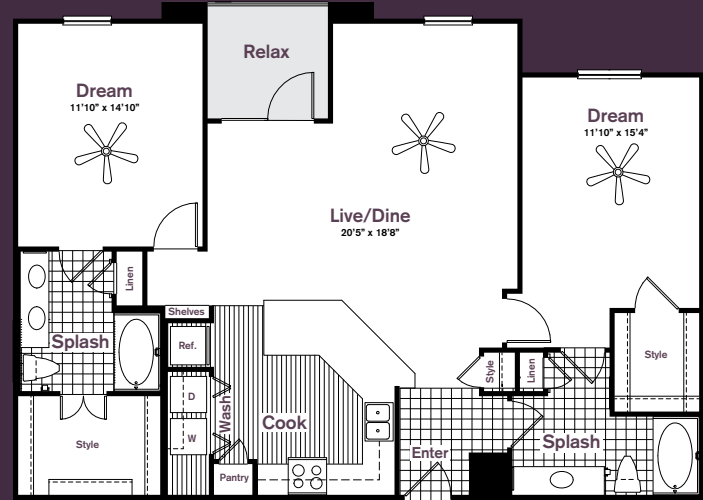
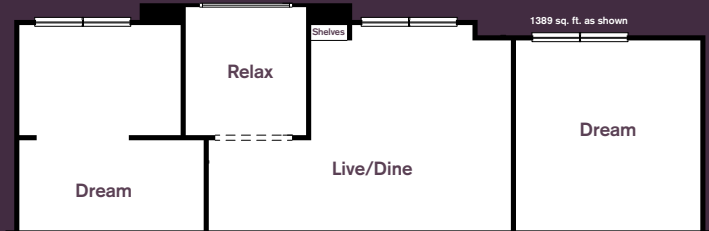


# FLOOR PLANS

## TWO BEDROOMS

### THE COSMOS

2 Bedroom, 2 Bath  
1,115 Sq. Ft.

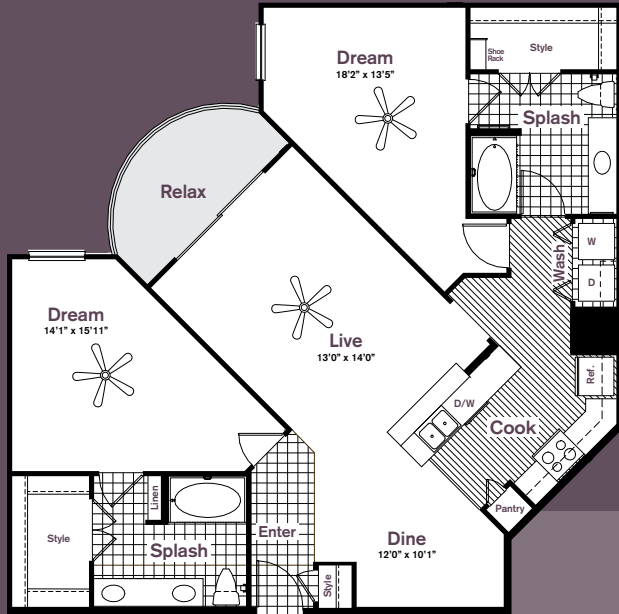


### THE UTOPIA

2 Bedroom, 2 Bath  
1,325-1,456 Sq. Ft.







## THE WALDEN

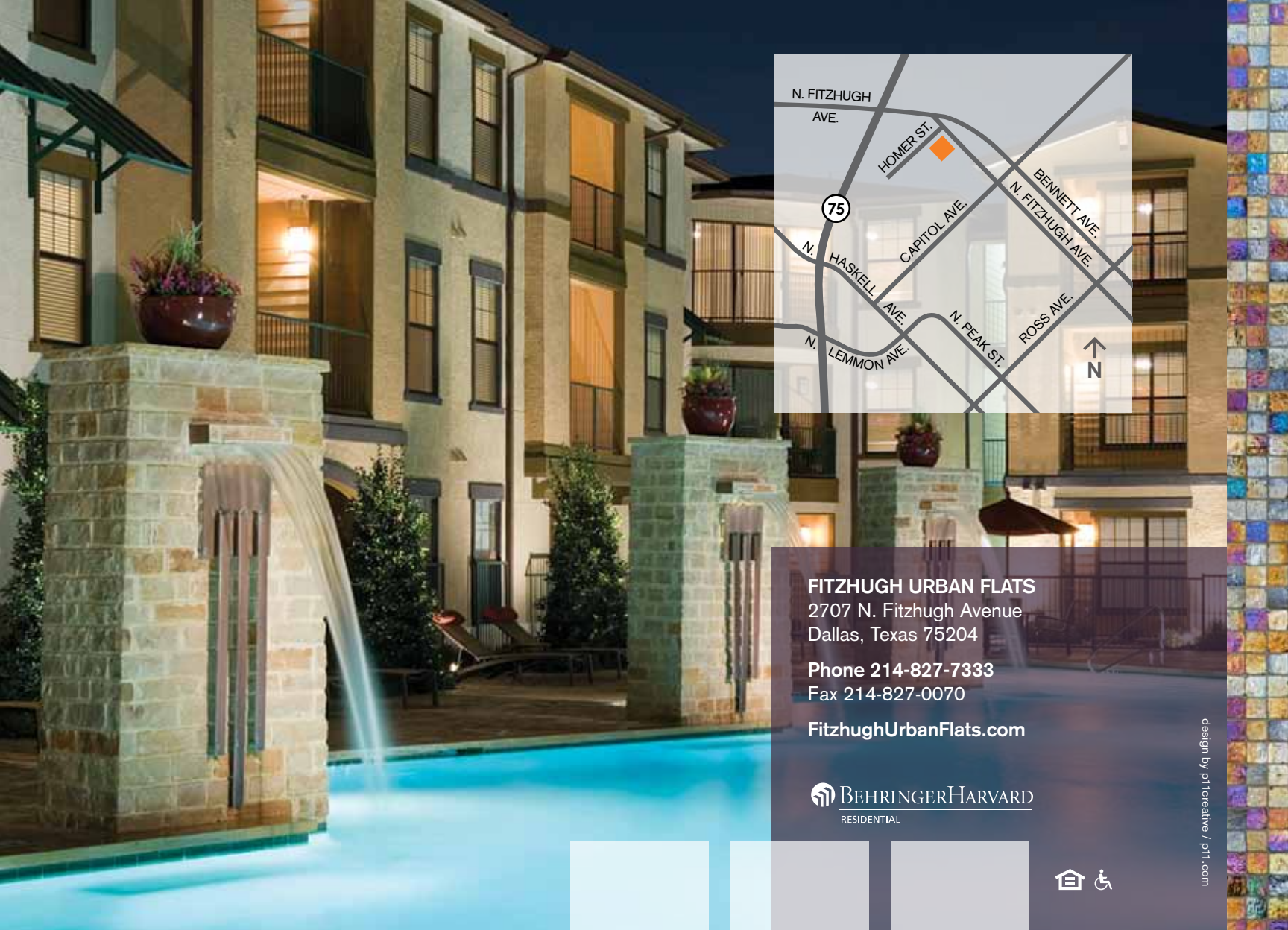
2 Bedroom, 2 Bath  
1,275 Sq. Ft.



## THE ODYSSEY

2 Bedroom, 2 Bath  
1,555 Sq. Ft.





**FITZHUGH URBAN FLATS**

2707 N. Fitzhugh Avenue  
Dallas, Texas 75204

Phone 214-827-7333

Fax 214-827-0070

[FitzhughUrbanFlats.com](http://FitzhughUrbanFlats.com)

 **BEHRINGER HARVARD**  
RESIDENTIAL

