



THE VINEYARDS

*Germantown, Tennessee*





## WELCOME TO THE VINEYARDS

*We are situated in the heart of Memphis' prestigious Germantown community and only two miles from Shelby Farms Park, a vast reserve of public parkland being developed by the City of Memphis which will become a mecca for those who love water sports, jogging, picnicking and other recreational activities. At The Vineyards you will find superbly manicured grounds and distinctive architectural styling that create a comfortable yet elegant setting. You can relax by the pool or work out in our fitness center. Apartment interiors include nine-foot ceilings, crown molding, fireplaces in select units, plus every modern convenience for today's fast-paced world. Experience The Vineyards where you will find all the luxury and convenience a home can offer.*



## APARTMENT FEATURES

*Nine-foot ceilings*  
*Crown molding*  
*Walk-in closets*  
*Washer and dryer included*  
*Refrigerators with icemakers*  
*Microwaves\**  
*Dishwashers*  
*Disposals*  
*Balconies and patios*  
*Outside storage\**  
*Steel entry doors with viewer*  
*Fireplaces\**  
*Double sink vanities\**  
*Garden tubs with glass enclosures\**



## COMMUNITY AMENITIES

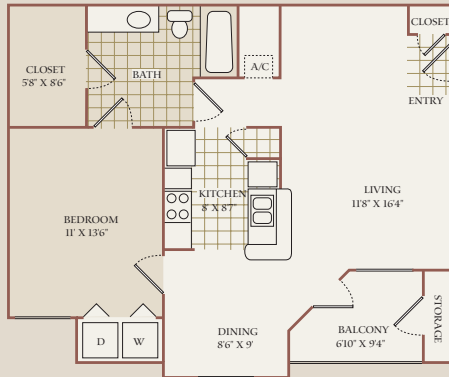
*Resident business center with Internet access*  
*Lodge style community center*  
*Swimming pool*  
*Indoor racquetball court*  
*24-hour fitness center*  
*Picnic gazebo and grills*  
*Cinema room*  
*Garages available*  
*Wi-Fi available at pool and clubhouse*  
*Sermantown schools*

*\* in select apartment homes*



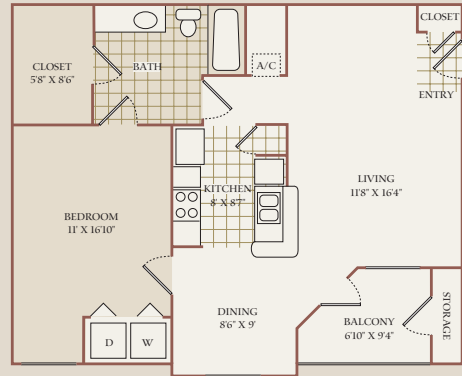
## CABERNET

*One Bedroom, One Bath  
778 Square Feet*



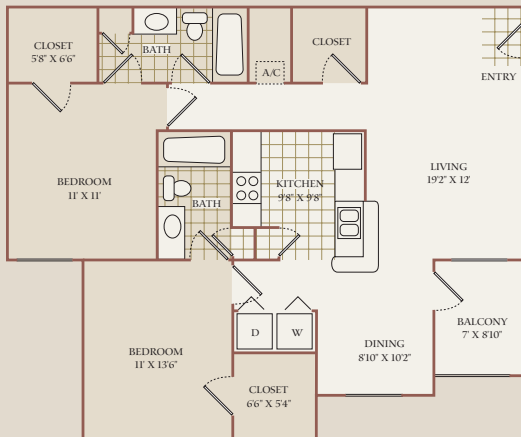
## CHARDONNAY

*One Bedroom, One Bath (upstairs)  
797 Square Feet*



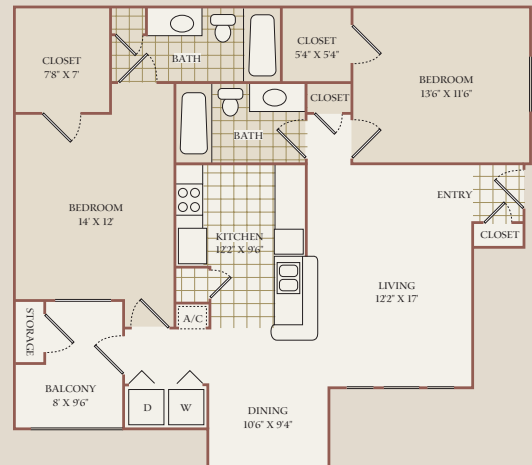
## MERLOT

*Two Bedroom, Two Bath  
1,133 Square Feet*



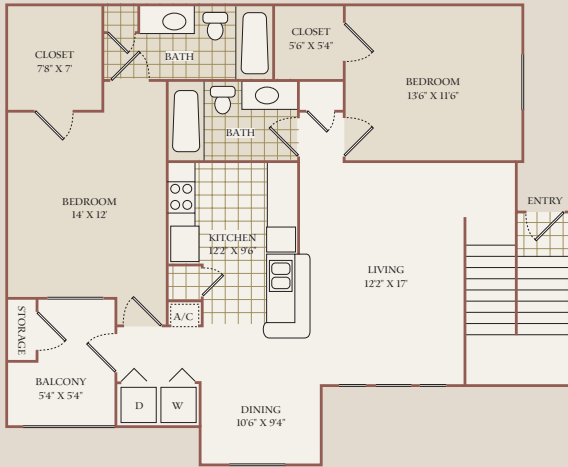
## MUSCAT

*Two Bedroom, Two Bath (downstairs)  
1,141 Square Feet*



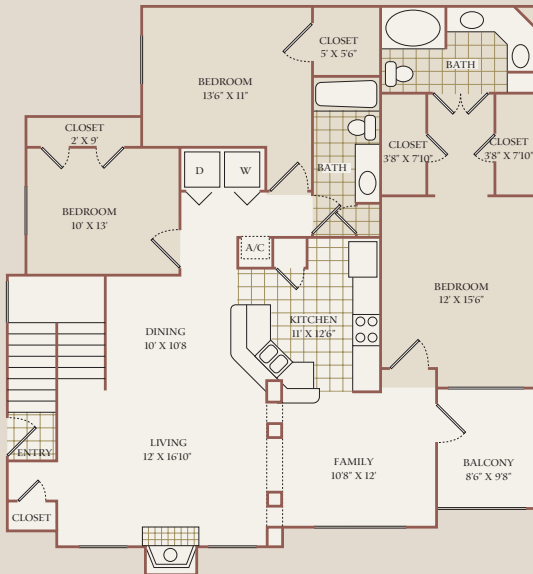
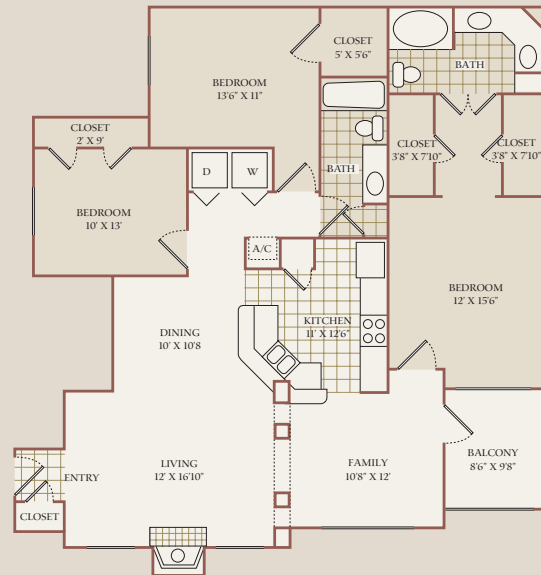
# SYRAH

*Two Bedroom, Two Bath (upstairs)  
1,243 Square Feet*



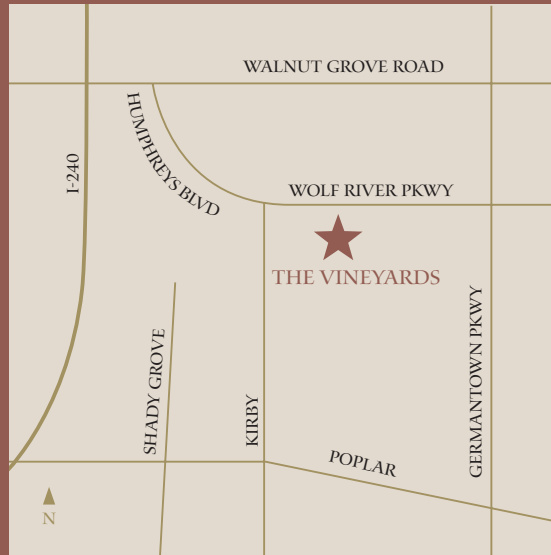
# RIESLING

*Three Bedroom, Two Bath (downstairs)  
1,564 Square Feet*



# ZINFANDEL

*Three Bedroom, Two Bath (upstairs) 1,661  
Square Feet*



## DIRECTIONS

### *From Interstate 240:*

*Take the Walnut Grove exit to Humphreys Boulevard. Turn right onto Humphreys Boulevard. The Vineyards is located approximately two miles on the right.*

### *From Germantown Parkway:*

*Turn west onto Wolf River Blvd. The Vineyards is located approximately 1½ miles on the left.*

7109 VINEYARD WAY GERMANTOWN, TN 38138

Tel: 901-755-9394 Fax: 901-755-9324

Email: [THEVINEYARDS@SENTINELCORP.COM](mailto:THEVINEYARDS@SENTINELCORP.COM)

[WWW.VINEYARDS-APARTMENTS.COM](http://WWW.VINEYARDS-APARTMENTS.COM)



PROFESSIONALLY  
MANAGED BY:  
Sentinel 