

QUICK CONNECT

Super Useful Info to Help You Manage Your Network



DIGITAL QUICK START GUIDES

Student housing properties: Fueled by the uncertainty of COVID-19 as well as the benefits of going green, we've created digital Wi-Fi onboarding instructions for your residents. These Quick Start Guides are accessible through Ground Control, using the directions at right.

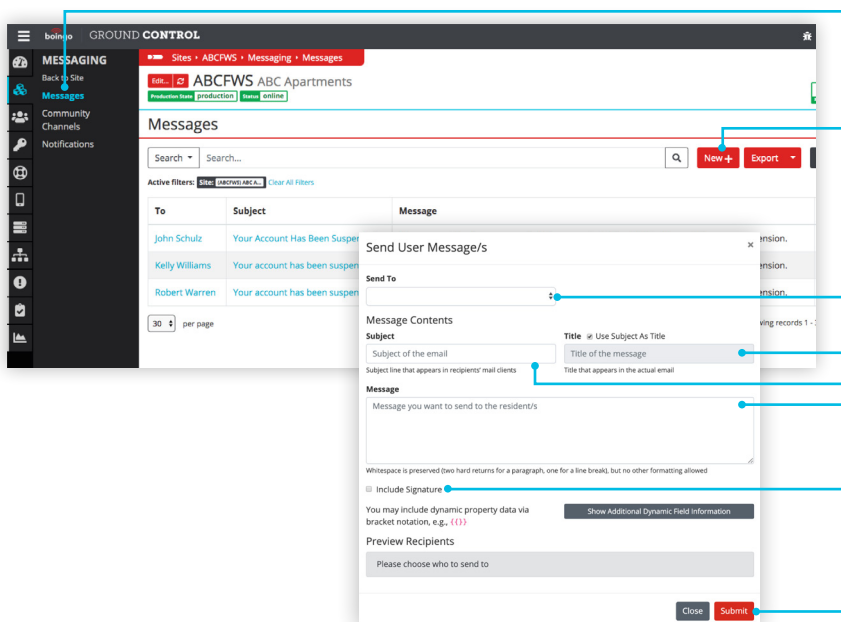
Conventional properties: Digital FAQs are available for your property and can be accessed through Ground Control by following the same instructions.

1. Log in to Ground Control.
2. Navigate to your site.
3. On the main site page under Resident Resources, find your Quick Start Guide and click "Download" to get the PDF.
4. Email the PDF to your new residents or print out a stack to leave at the front desk.

GROUND CONTROL TIPS AND TRICKS

MESSAGE YOUR RESIDENTS FROM A SAFE SOCIAL DISTANCE

Have you tried the "Messaging" feature in Ground Control? Use it to keep your residents informed on upcoming maintenance, events and property announcements. Here's how:



- 1 In Ground Control, select "Messaging" on the left navigation bar.
- 2 On the Messages landing page, you will see a list of past sent messages. To send a new message, select the red "New+" button to pop open a blank message window.
- 3 Choose who you plan to send the message to via the "Send To" dropdown — you can send to a single resident (via the "Account" dropdown), or the entire property.
- 4 Fill in the email Subject line, Title, and Message fields.
- 5 To include your signature, click the radio button "Include Signature," just below the message field.
- 6 Ready to send? Click "Submit."

INDUSTRY NEWS: INSIGHTS AND TRENDS

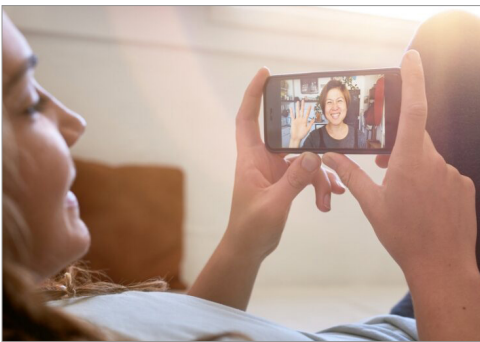


STUDENT HOUSING BUSINESS

Connectivity on a Post-COVID-19 Campus

With more virtual classes expected this fall, internet service providers are working to expand bandwidth capabilities for student housing owners.

[Read the Article](#)

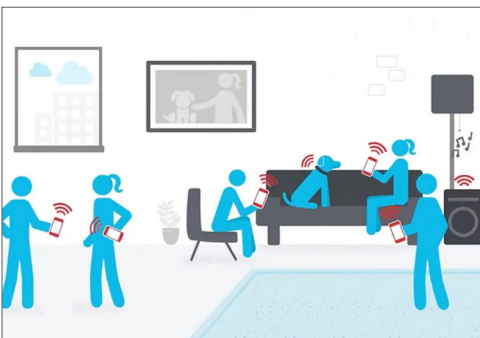


BUILDING, DESIGN + CONSTRUCTION

Let's Talk: What You Need to Know About Wi-Fi Calling

Wi-Fi calling has been around for many years, but confusion remains about what it is, how it works, and why it's expected to grow in popularity.

[Read the Article](#)



BUILDING, DESIGN + CONSTRUCTION

Boingo Reinvents Multifamily Connectivity With World's Best Wi-Fi

Now, more than ever, staying connected is essential. Whether it's using FaceTime to check on loved ones, turning your living room into a home office, or ordering food via Grubhub, we all depend on reliable Wi-Fi.

[Read the Article](#)