

Arrive.

NORTH BEND

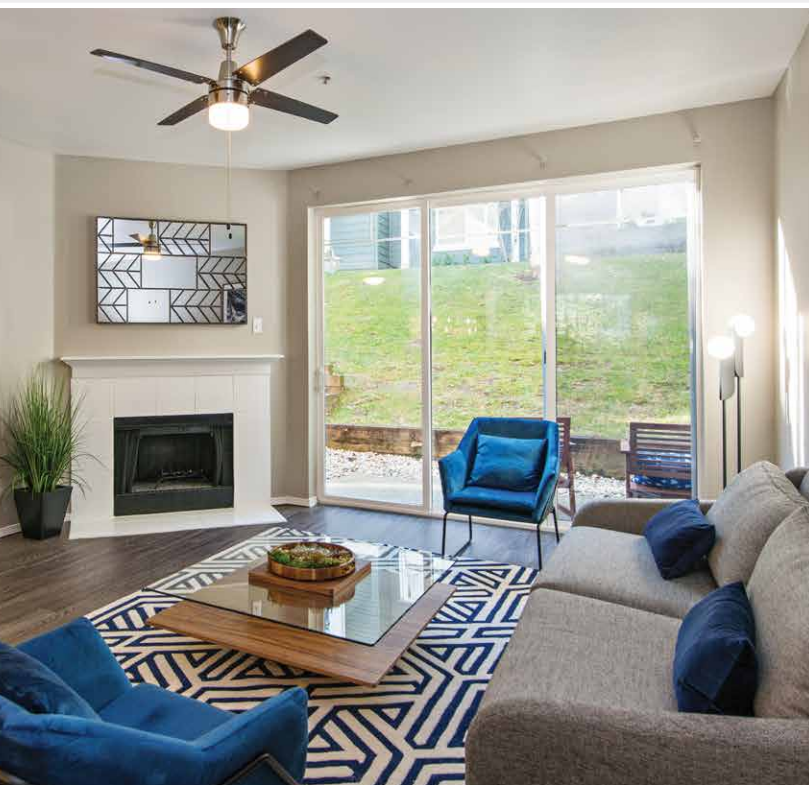
Don't Just Come Home,
Arrive.

Located Minutes from
Snoqualmie Waterfall



Community Features

- Community Clubhouse with Resident Lounge
- Resort-Style Pool and Spa
- Fitness Center with Free Weights Available
- Pet Friendly
- Playground
- Mountain Views
- Freeway Access
- Business Center
- Package Receiving



Apartment Features

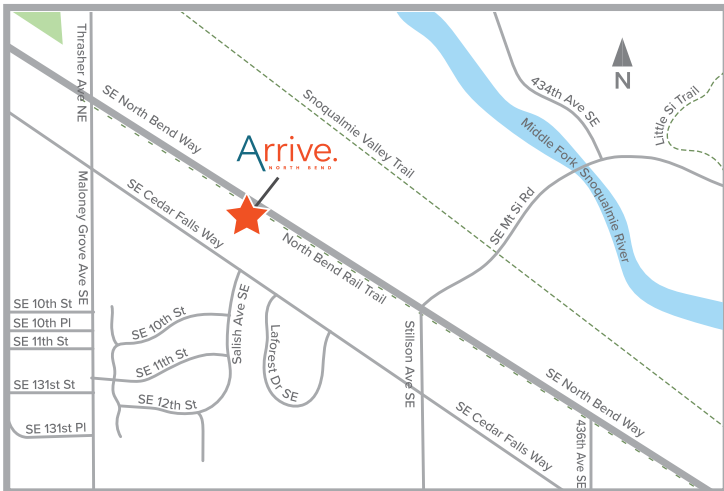
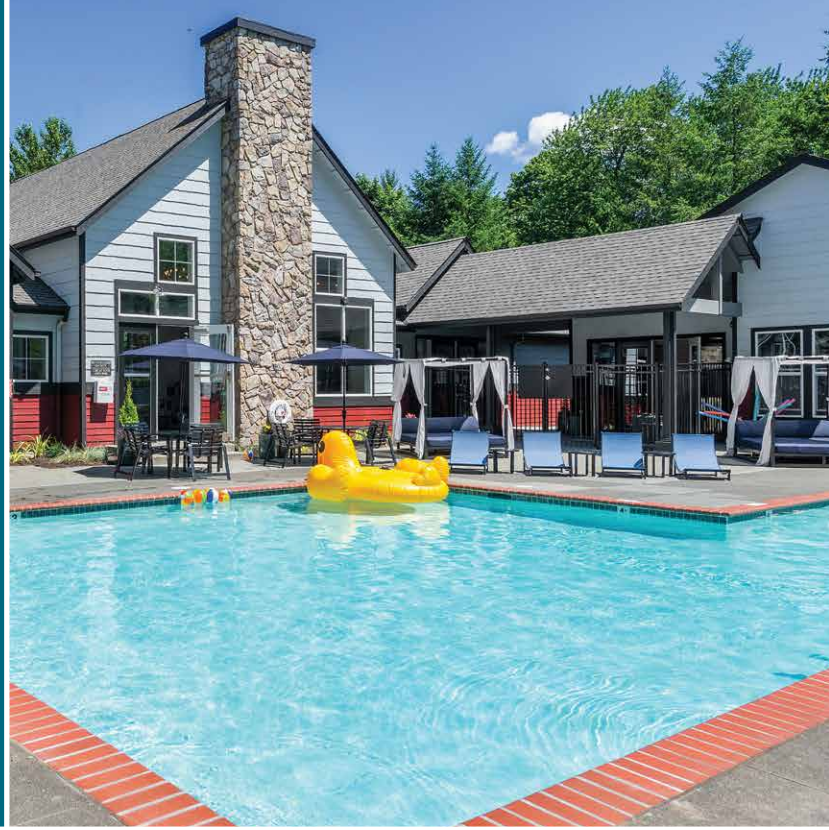
- Energy Star® Appliances
- Premium Plank Vinyl*
- Tile Flooring*
- Vaulted Ceiling
- Fireplace*
- Private Balcony or Patio*
- Washer/Dryer
- Individual Climate Control

*Select apartments



Nestled in the serene backdrop of Rattlesnake Ridge and Mt. Si, Arrive North Bend offers spacious two, three, and four-bedroom townhomes with attached garages. Just a short drive from Bellevue, Redmond, Issaquah, and Seattle, residents can take their furry friends for a hike on the Rattlesnake Ledge Trail, spend the day along the Ridge on the East Peak train, or spend the day in Snoqualmie.

On-site amenities include a sparkling pool, invigorating spa, state-of-the-art fitness center, and outdoor barbecue and playground areas. Whether you wish to enjoy the natural surroundings or are looking for an easy commute to the corporate offices of Microsoft, Nintendo, or Hewlett-Packard, we welcome you home to Arrive North Bend!



Rentsparency™

Know Before You Rent

With RENTsparency, you can rent online with confidence. With websites developed to provide comprehensive rental and community information, you will be fully informed about community pet policies, amenity information, lease terms, rental criteria, monthly payments, and real-time availability. Our streamlined online leasing process allows you to research and choose a floor plan, select a unit and secure a move-in date, complete an application and sign a lease — from any device, anywhere, at any time.

That's RENTsparency

Arrive.

NORTH BEND

1525 Rock Creek Ridge
North Bend, WA 98045

425-278-4000

arrivenorthbend.com

